

Permanent Magnetic Block

SAV 242.01

With fine and extra fine pole pitch, non-switchable

For machining and shaping of small workpieces, such as punches etc. For clamping of thin components type MH 204 is recommended which has an extra fine pole pitch.

Features:

Two or three magnetic clamping surfaces, pole pitch 4 mm, or 1.3 mm for type MH 204.

Types MH 201S to MH 203S use SmCo₅-magnets with extremely high holding forces for materials that are difficult to magnetize.

Nominal holding force:

80 N/cm² for MH201 to MH204

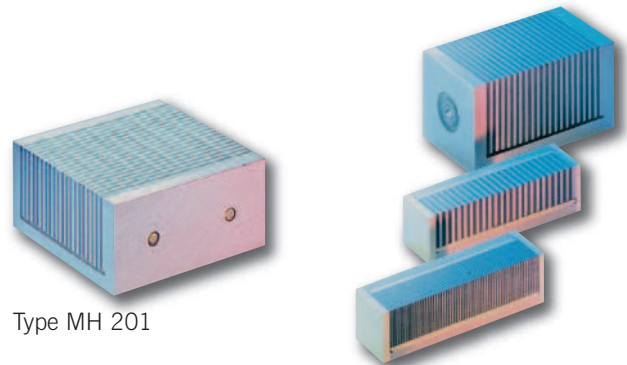
180 N/cm² for MH201-S to MH204-S

Field height: 6 mm

Pole plate wearing limit:

14 mm for MH201 and MH202

6 mm for MH203 and MH204

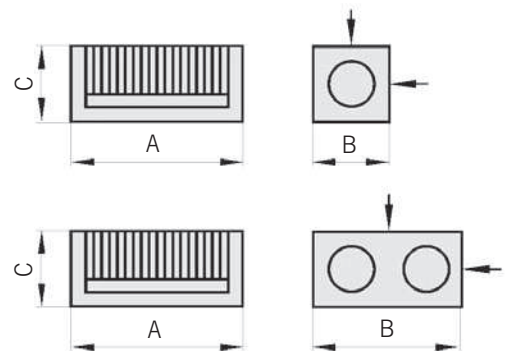


Type MH 201

Type MH 202 to MH 204



Type	Dimensions in mm			Max. angular deviation	Magnetic faces	Weight in kg
	A	B	C			
MH 201 MH 201S	100	100	50	5'	1 face 100 x 100 2 faces 100 x 50	3.6
MH 202 MH 202S	100	50	50	5'	3 faces 100 x 50	1.7
MH 203 MH 203S	100	25	25	5'	2 faces 100 x 25	0.5
MH 204	-	100	25	25	2 faces 100 x 25	0.5



Ordering example: Permanent Magnetic Block SAV 242.01 - MH 201
Ordering key: Name SAV - No. - Type

Permanent Magnetic Switchable Block

SAV 242.02

With 3 magnetic clamping surfaces

Use:

Angular and parallel grinding of small and medium-sized workpieces.

Features:

ON-OFF control with rotary switch.
Three magnetic faces.

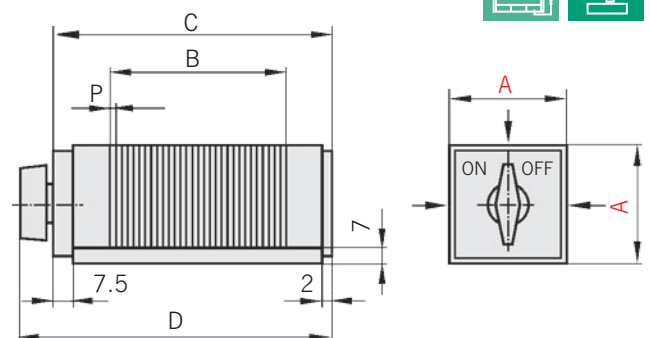
Laminations 0.5 mm brass /
1 mm steel.

Nominal holding force: 60 N/cm²

Magnetic field height: 2 mm



Dimensions in mm					Weight in kg
A	B	C	D	P	
55	90.5	125.5	146	0.5+1	2.8
70	90.5	125.5	151	0.5+1	4.0



Ordering example: Permanent Magnetic Switchable Block SAV 242.02 - 55
Ordering key: Name SAV - No. - A