

Permanent Magnetic "V"-Block

SAV 242.21

With 4 magnetic surfaces

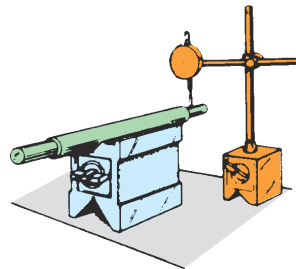
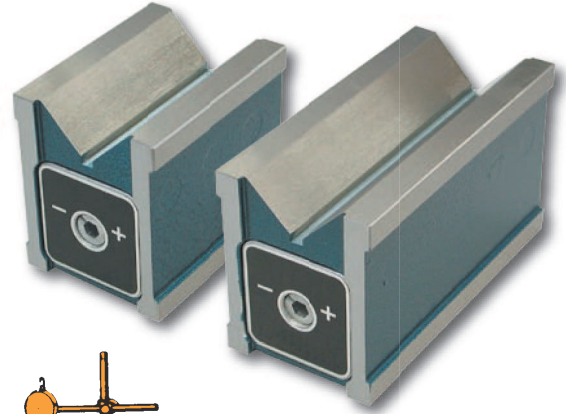
Features:

4 magnetic surfaces (top, bottom and two sides). ON/ OFF switch for top and bottom faces. Completely sealed.

Available in wooden storage case SAV 539.02-HK2 against price adder.

Available single (S)
or in pairs (P)

Planar parallelism: < 0.01 mm



| Length | Dimensions in mm | | | Nom. hold. force in daN | Weight in kg |
|--------|------------------|--------|----------------------|-------------------------|--------------|
| | Width | Height | Width of large block | | |
| 80 | 60 | 73 | 38 | 30 | 2.0 |
| 125 | 60 | 73 | 38 | 45 | 3.3 |



Ordering example: Permanent Magnetic „V“ Block SAV 242.21 - 125
Ordering key: Name SAV - No. - Length

Permanent Magnetic "V"-Block

SAV 242.22

Single or in pairs

Features:

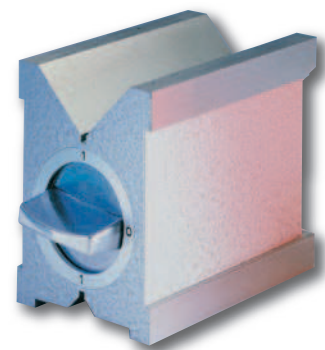
2 magnetic contact surfaces (large "V"-block and opposite face), which are switched on and off simultaneously.

Available single (S) or in pairs (P).

Available in wooden storage case SAV 539.02 (for S) and SAV 539.04 (for P) against price adder.

Rectangularity: 0.004 mm

Planar parallelism: 0.004 mm



| Length | Dimensions in mm | | | Nom. hold. force in „V“ in daN | Nom. hold. force to surface in daN | Weight in kg |
|--------|------------------|--------|--------------------|--------------------------------|------------------------------------|--------------|
| | Width | Height | Workpiece diameter | | | |
| 80 | 67 | 96 | 6 - 66 | 40 | 90 | 2.9 |
| 100 | 70 | 96 | 6 - 70 | 40 | 120 | 3.8 |

Ordering example: Permanent Magnetic „V“ Block SAV 242.22 - 100 - S
Ordering key: Name SAV - No. - Length - Single or pair