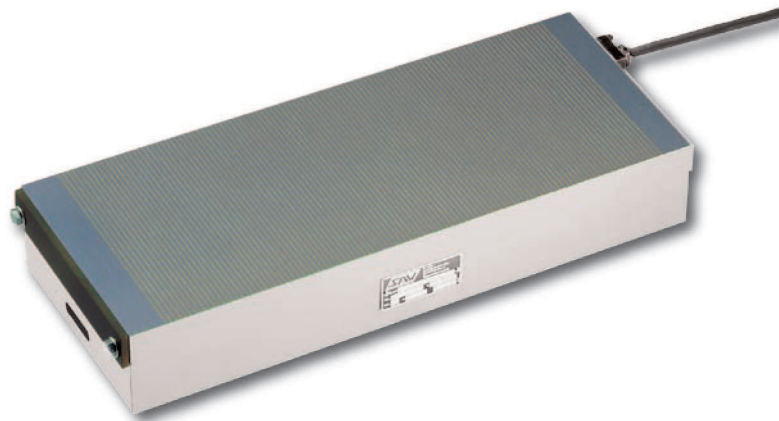


Electro Magnetic Chuck

SAV 243.40

With fine transverse pole pitch $P = 4 \text{ mm}$

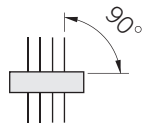
Electromagnetic system with very narrow pole pitch. Especially suitable for thin workpieces. Workpiece positioning in length direction of the chuck.



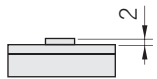
Use:

Clamping of thin, plate shaped workpieces with form and positional tolerances of 0.01 to 0.02 mm.

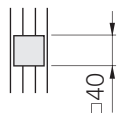
- for workpiece positioning cross to pole pitch



- for thin workpieces of min. 2 mm thick



- for flat workpieces with min. dimensions 40 x 40 mm



Nominal holding force:

100 N/cm²,
adjustable with control unit with encoded switch

Nominal operating voltage:

24 V DC up to 118 W
110 V DC for all sizes

Features:

- especially fine, uninterrupted transverse pole pitch, 3 mm steel and 1 mm brass
- glued lamination with additional pull anchors cross to lamination
- fine grid pole plate to body connection
- 8 mm pole plate wearing limit
- low magnetic field height of only 4 mm
- mounting slots in both short faces
- through holes in sizes over 1000 mm length on specification
- robust and waterproof
- sealed to IP 65
- suitable for continuous (100%) operation
- for use with control unit type SAV 876.10 (see chapter 04)

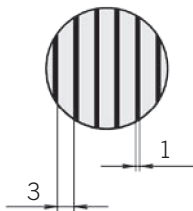
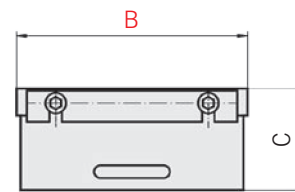
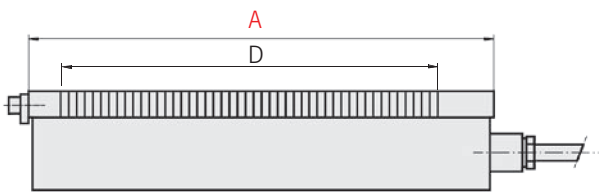
Auxiliary equipment:

- sidestop rail on short and long face
- connecting cable, 3 m, on the right-hand, short face
- lifting bolts on larger models

Electro Magnetic Chuck

SAV 243.40

With fine transverse pole pitch $P = 4 \text{ mm}$



Dimensions in mm				Power rating in W	Weight in kg
A	B	C _{±0.1}	D		
450	175	87	397	106	51.0
400	200	87	349	118	52.0
500	200	87	453	140	64.0
600	200	87	549	162	77.0
800	200	87	749	206	103.0
500	250	87	453	150	81.0
600	250	87	549	180	97.0
800	250	87	749	233	129.0
500	300	87	453	175	97.0
600	300	87	549	206	116.0
800	300	87	749	268	155.0
1000	300	87	949	330	193.0

Dimensions in mm				Power rating in W	Weight in kg
A	B	C _{±0.1}	D		
600	350	87	549	235	135.0
800	350	87	749	305	180.0
1000	350	87	949	375	225.0
600	400	87	549	265	155.0
700	400	87	653	310	181.0
800	400	87	749	345	206.0
1000	400	87	949	425	258.0
1200	400	87	1149	510	310.0
800	500	87	749	422	257.0
1000	500	87	949	510	322.0
1200	500	87	1149	605	386.0

Other sizes and operating voltages available on request. Larger clamping surfaces can be made by flush mounting several units.

Please refer to SAV 876.10 to SAV 876.06, for details regarding suitable control units, based on the power rating (chapter 04).

Ordering example: Electro Magnetic Chuck SAV 243.40 - 1200 x 500 - 110 V

Ordering key: Name

SAV - No. - A x B - Operating voltage