

Permanent Magnetic Circular Chuck

SAV 244.03

With parallel pole pitch $P = 7$ mm, flat edition

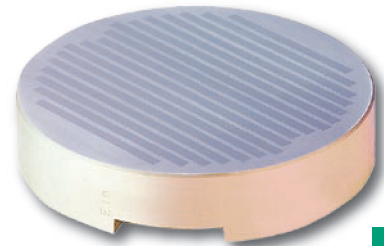
Use:

Small and medium-sized workpieces.

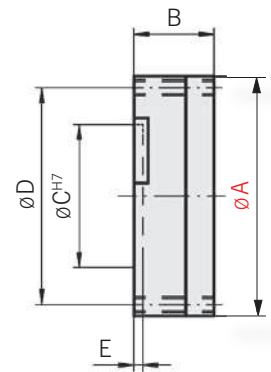
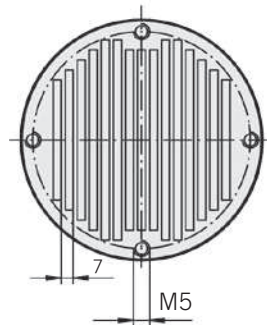
Features:

Special magnetic configuration enabling the maximum holding force to be reached with workpieces as thin as 1 mm. ON-OFF control by means of a detachable socket wrench (radial adjustment). Available with flange on request (SAV 248.90 to 248.94, see Page 14/15).

Nominal holding force: 100 N/cm²
 Magnetic field height: 6 mm
 Pole plate wearing limit: 3 mm



Dimensions in mm					Weight in kg
A	B ^{+0.5} ₋₁	C	D	E	
100	32	80	87.5	3	1.1
150	32	130	137.5	3	2.6



Ordering example: Permanent Magnetic Circular Chuck SAV 244.03 - 150
 Ordering key: Name SAV - No. - A

Permanent Magnetic Circular Chuck

SAV 244.04

With fine parallel pole pitch $P = 2.5$ mm

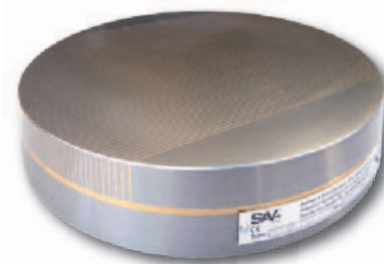
Use:

Clamping of small and thin to medium-sized workpieces.

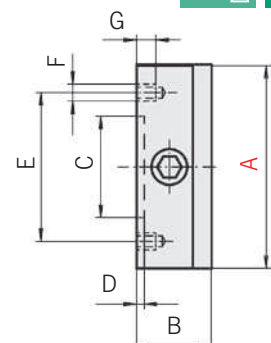
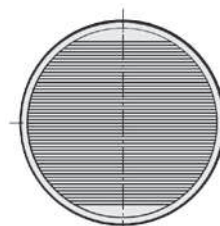
Features:

Extremely low height due to use of neodymium-iron-boron magnets. Pole pitch $P = 2.5$ mm. Holding force continuously variable. Available with flange on request (SAV 248.90 to 248.94, see Page 14/15).

Nominal holding force: 80 N/cm²
 Magnetic field height: 8 mm
 Pole plate wearing limit: 5 mm



Dimensions in mm							Weight in kg
A	B ^{+0.5} ₋₂	C	D	E	F	G	
160	43	125	2	140	4 x M8	14	6.5
200	43	160	2	180	4 x M8	14	10.0
250	43	200	2	224	4 x M10	14	15.0
300	45	230	3	260	4 x M10	14	25.0



Other sizes on request.

Ordering example: Permanent Magnetic Circular Chuck SAV 244.04 - 300
 Ordering key: Name SAV - No. - A