

Permanent Magnetic Circular Chuck

SAV 244.05

With parallel pole arrangement P = 5 / 10 mm, enhanced magnet system

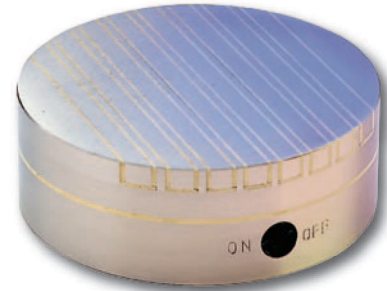
Use:

For workpieces that are difficult to clamp.

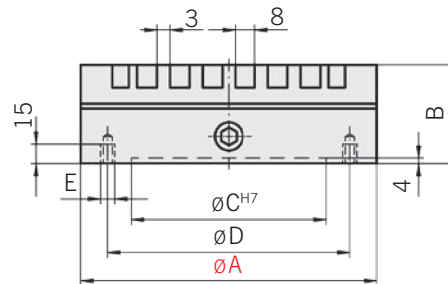
Features:

Extremely high holding force combined with slim construction. Available with flange on request (SAV 248.90 to 248.94, see Page 14/15). Laminations 3 mm steel / 2 mm brass / 8 mm steel.

Nominal holding force: 120 N/cm²
 Magnetic field height: 15 mm
 Top plate wearing limit: 10 mm



Dimensions in mm					Weight in kg
A	B ^{+0.5} ₋₂	C	D	E	
125	55	100	112	M6 (4x)	4.5
160	55	125	140	M8 (4x)	7.5
200	55	160	180	M8 (4x)	12.0
250	55	200	224	M10 (4x)	18.0
315	55	250	280	M10 (4x)	29.0
400	55	315	355	M10 (4x)	47.0



Ordering example: Permanent Magnetic Circular Chuck SAV 244.05 - 400
 Ordering key: Name SAV - No. - A

Permanent Magnetic Circular Chuck

SAV 244.10

Switchable

Use:

As an auxiliary magnet to be used on a circular chuck for holding smaller, delicate workpieces. Also suitable for fixtures and as a holding magnet.

Features:

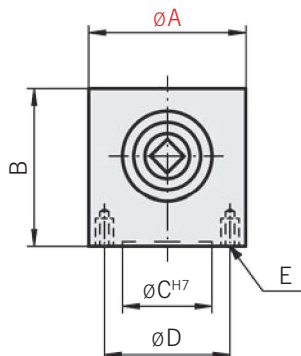
Switchable permanent magnet, holding surface on the upper face.

Pole arrangement:

ø 50 mm 1.5 mm brass / 6 mm steel,
 ø 80 mm 2 mm brass / 8 mm steel



Dimensions in mm					Nominal holding force in N	Weight in kg
A	B ^{+0.5} ₋₂	C	D	E		
50	50	25	35	4 x M5	85	0.7
80	65	50	60	4 x M6	500	2.2



Ordering example: Permanent Magnetic Circular Chuck SAV 244.10 - 80
 Ordering key: Name SAV - No. - A