



COMPACT ELECTRICAL ADAPTER PLUG

SAV 248.86

For use in electro permanent magnetic circular chuck power supplies

Features:

- Compact design
- Encapsulated
- Maintenance-free

Use:

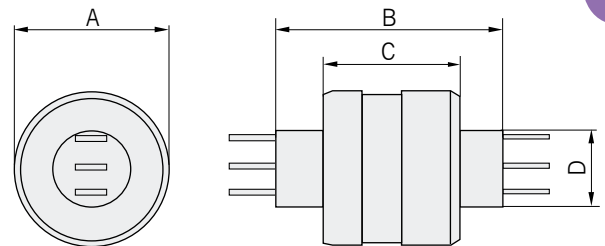
- For fitting to the spindle end.
- Alternatively in the magnet centre for custom designs.

Technical data:

- Protection rating IP 51
- Low transfer resistance

Fixing:

- By radial clamping around diameter D.

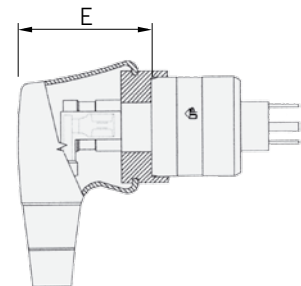


Electrical adapter plug

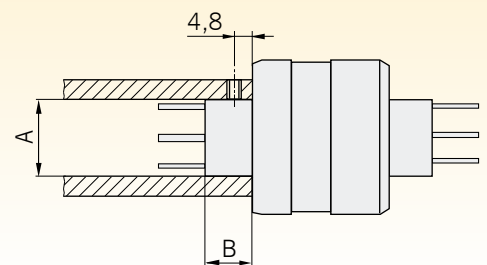
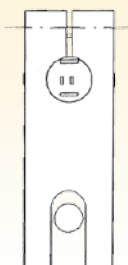
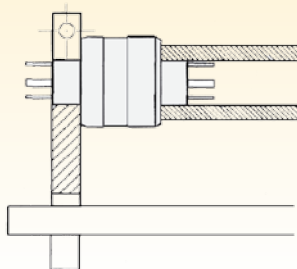
No. of contacts	max. continuous current in A	Voltage in V (AC/DC)	max. RPM	Dimensions in mm			
				A	B	C	D
3	30	0 - 250	1200	31.6	46.2	27.9	15.87
4	30	0 - 500	300	45	69.1	29	31.70

Plug

No. of contacts	Dimensions in mm
	E
3-S	46.2
4-S	65.8



Installation examples:



Ordering example:

Compact electrical adapter plug SAV 248.86 - 4
Ordering key SAV - No. - No. of contacts

Ordering example Stecker:

Plug SAV 248.86 - 4-S
Ordering key SAV - No. - Type

No. of contacts	Dimensions in mm	
	A	B
3	15.87	10.2
4	31.75	20.3