

Short Taper Adapter without mounting bolts

SAV 248.90

To fit circular magnetic chucks to spindle nose

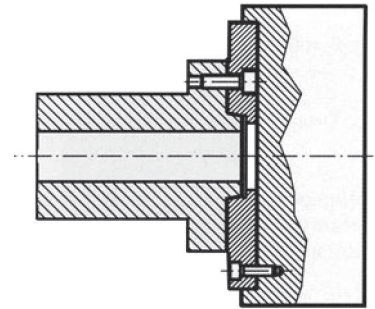
Use:

Mounting of circular magnetic chucks or other clamping tools to short taper spindle noses of type **DIN 55026 (55021)** form A and B, ISO 702/I A1 and A2, ASA B5.9 A1 and A2.

Features:

Mild steel adapter in accordance with DIN, ISO and ASA-standards.

Fully prepared on spindle-side. Preparations for chuck side carried out in accordance with customer's requirements (please supply suitable drawing). Rotary magnets can be supplied ready fitted with adapter.

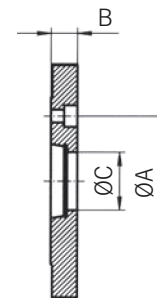


Spindle nose size	Dimensions in mm		
	A	B	C
3	75.0	18	45
4*	82.6	18	45
4**	85.0	18	45
5	104.8	24	60
6	133.4	28	80
8	171.4	32	90
11	235.0	35	120
15	330.2	42	120

Sizes B, C, and D as well as mounting holes pitch circle according requirements or customer specification.

* For spindle nose type **DIN 55026**

** For spindle nose type **DIN 55021**



Ordering example: **Short Taper Adapter SAV 248.90 - 4 - DIN 55026**

Ordering key: Name SAV - No. - Spindle nose size - Standard

Short Taper Adapter with bayonet ring fixing

SAV 248.91

To fit circular magnetic chucks to spindle nose

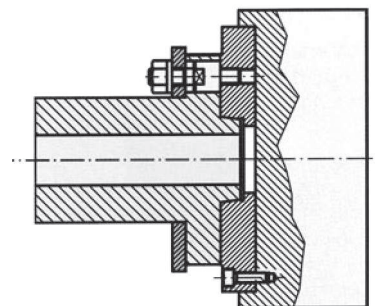
Use:

Mounting of circular magnetic chucks or other clamping tools to short taper spindle noses of type **DIN 55027 (55022)** and ISO 702/III

Features:

Mild steel adapter in accordance with DIN, ISO and ASA-standards with studs and bayonet ring fixing. Fully prepared on spindle-side.

Preparations for chuck side carried out in accordance with customer's requirements (please supply suitable drawing). Circular chucks can be supplied ready fitted with adapter.

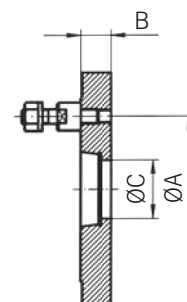


Spindle nose size	Dimensions in mm			Number of studs
	A	B	C	
3	75.0	18	40	3
4*	82.6	18	45	3
4**	85.0	18	45	3
5	104.8	24	60	4
6	133.4	28	80	4
8	171.4	32	90	4
11	235.0	35	120	6
15	330.2	42	120	6

Sizes B, C, and D as well as mounting holes pitch circle according requirements or customer specification.

* For spindle nose type **DIN 55027**

** For spindle nose type **DIN 55022**



Ordering example: **Short Taper Adapter SAV 248.91 - 15 - DIN 55027**

Ordering key: Name SAV - No. - Spindle nose size - Standard