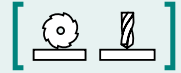


SAV 242.92

ELECTRO PERMANENT MAGNETIC CHUCK TOWERS

Chuck towers, precision-milled



APPLICATION

For horizontal milling and drilling processes.

DESIGN

Chuck tower made of St 52-3, precision-milled. With electro permanent magnetic chucks SAV 243.77.

Fastening holes upon agreements.

TECHNICAL DATA

- Perpendicularity: 0.03/1000 mm
- Parallelism: 0.04/1000 mm
- Rated holding force: 150 N/cm²
- Magnetic field height: 12 mm
- Wear layer of the pole plate: 5 mm

Technical data for magnets as for SAV 243.77.

RATED VOLTAGE

360V DC IMP

SCOPE OF DELIVERY

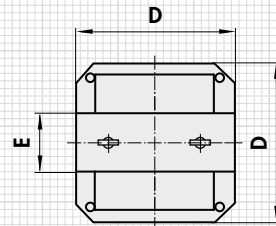
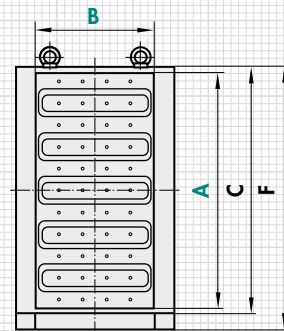
- Chuck tower with heavy-duty power connector
- Suitable for connecting to the SAV 876.17 control unit
- Control unit not included



UPRIGHT CHUCK SAV 242.92-2 WITH 2 MAGNETS TYPE SAV 243.77

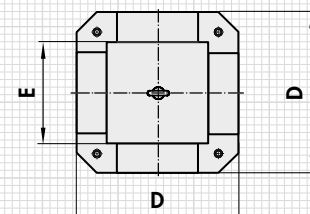
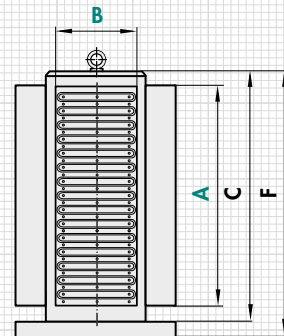
mm							kg
A	B	C	D	E	F	Pole pitch	Weight
630	400	660	500	150	700	27.5	859.0
590	400	620	400	150	660	55	812.0
580	400	620	400	150	660	85	728.0

Other designs and dimensions on request.



CHUCK TOWERS SAV 242.92-4 WITH 4 MAGNETS TYPE SAV 243.77

mm							kg
A	B	C	D	E	F	Pole pitch	Weight
400	200	415	320	200	455	27.5	287.0
520	200	620	400	256	660	27.5	437.0
630	300	660	500	356	700	27.5	776.0
590	300	660	500	356	700	55	812.0
810	400	815	630	454	860	55	1408.0
580	300	660	500	356	700	85	864.0
750	400	660	500	454	700	85	1372.0



ORDERING EXAMPLE

Designation SAV no. - A x B - number of magnets - pole pitch - magnet voltage
 Electro permanent magnetic chuck tower SAV 242.92-4 - 810 x 400 - 55 - 360 V