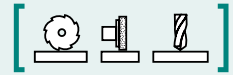


**SAV 243.11**

**PERMANENT MAGNETIC CHUCKS**

With continuous transverse pole pitch  $P = 15\text{ mm}$ ,  
with neodymium magnets, amplified system



**APPLICATION**

Suitable for heavy and rough machining. The dense magnetic field with maximum concentration opens up areas of application for small, medium and large workpieces, even with rough or uneven surfaces.

**DESIGN**

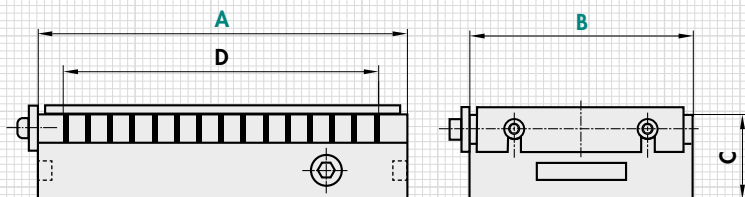
Neodymium magnet system with high holding force. ON/OFF control using a manual lever. In the OFF position, a low-strength opposite field facilitates removing of the workpieces. The magnets are equipped with lengthwise and crosswise stops. Pole divisions made of 3 mm brass/12 mm steel.

**TECHNICAL DATA**

- Rated holding force: 150 N/cm<sup>2</sup>
- Magnetic field height: approx. 12 mm
- Wear layer of the pole plate: 5 mm



mm				kg
A	B	C <sup>+0.5 -2</sup>	D	Weight
250	150	56	199	17.0
300	150	56	244	20.0
350	150	56	289	24.0
400	200	59	349	35.0
500	200	59	439	44.0
600	200	59	544	52.0
600	300	62	544	87.0



**ORDERING EXAMPLE**

Designation                      SAV no. - A x B  
Permanent magnetic chuck    SAV 243.11 - 500 x 200