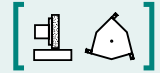


SAV 248.94

MORSE TAPER FITTINGS

For adapting to machine and workholding fixture

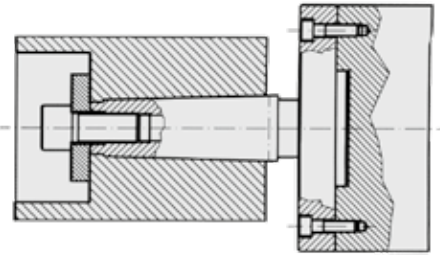


APPLICATION

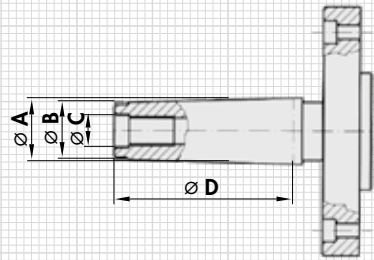
For flanging on round magnets or other workholding fixtures. For fittings as per DIN 228.

DESIGN

Soft steel flanges as per DIN. Machined on the spindle side. The magnet-side/chuck-side adaptation is carried out as required (please state diameter and hole pattern when ordering). On customer request, we supply our round magnets already fully flanged.
Hardened, polished version made of case-hardened steel available on request.



Morse taper size	mm			
	A	B	C	D
MK 0	9.045	6.4	—	50.0
MK 1	12.065	9.4	M 6	53.5
MK 2	17.78	14.6	M 10	64.0
MK 3	23.825	19.8	M 12	81.0
MK 4	31.267	25.9	M 16	102.5
MK 5	44.399	37.6	M 20	129.5
MK 6	63.348	53.9	M 24	182.0



ORDERING EXAMPLE

Designation	SAV no. - Morse taper size
Morse taper fitting	SAV 248.94 - MK 6 and dimensions

Dimensions as per requirements or your specifications.