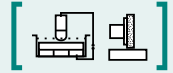


SAV 242.02

PERMANENT MAGNETIC CLAMPING BLOCKS

With three magnetic chucking areas



APPLICATION

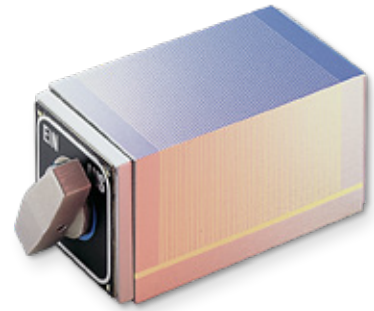
For angled and parallel grinding of small and medium workpieces. Suitable as an add-on block for the base magnet on the machine.

DESIGN

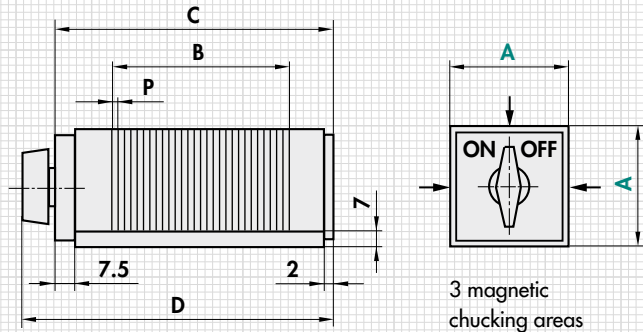
Switched on and off with a rotary knob.
3 magnetic contact surfaces.

TECHNICAL DATA

- Rated holding force: 60 N/cm²
- Magnetic field height: 2 mm
- Pole divisions: 0.5 mm brass/1.0 mm steel



mm					kg
A	B	C	D	P	Weight
55	90.5	125.5	146	0.5 +1	2.8
70	90.5	125.5	151	0.5 +1	4.0



ORDERING EXAMPLE

Designation	SAV no. - A
Permanent magnetic clamping block	SAV 242.02 - 55