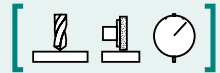


SAV 242.21**PERMANENT MAGNETIC V BLOCKS**

Four magnetic contact surfaces

**APPLICATION**

Positioning

DESIGN

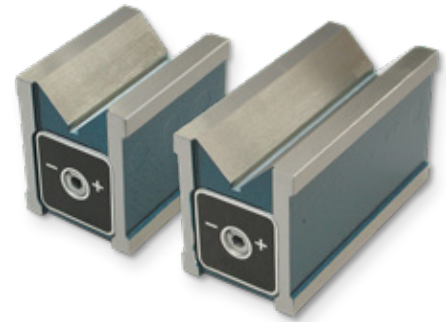
4 magnetic contact surfaces (top and bottom and 2 face sides) which are switched on and off together.

2 opposite control points including removable key. Wooden storage box SAV 539.02 - HK2 available (surcharge applies).

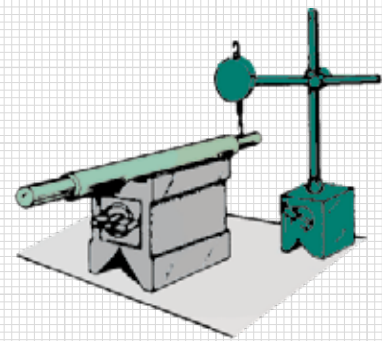
Available individually (**S**) and in pairs (**P**). The prism pair is ground to the same height.

TECHNICAL DATA

- Plane parallelism: < 0.01 mm
- Prism angle: 90°



Length	Width	Height	mm		Rated holding force	kg
			Workpiece diameter	Width of large prism		
125	98	13.5	13.5	52	50	15.0
180	153	13.5	13.5	52	50	15.0
250	225	12.5	12.5	52	50	15.0

**ORDERING EXAMPLE**

Designation	SAV no. - length
Permanent magnetic V block	SAV 242.21 - 125