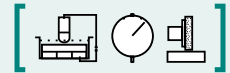


SAV 242.31

PERMANENT MAGNETIC CLAMPING BLOCKS

With strong prism

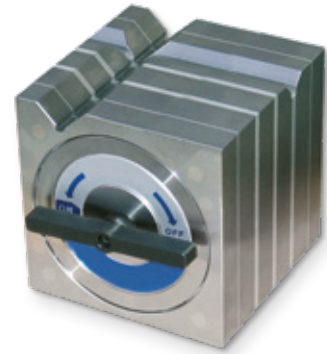


DESIGN

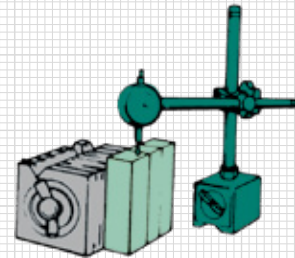
4 magnetic contact surfaces (top surface, bottom surface prism and 2 sides). Including removable key. Strong, switchable permanent magnet.

TECHNICAL DATA

- Perpendicularity: 0.025/100 mm
- Parallelism: 0.015/100 mm
- Prism angle: 90°



mm			Workpiece diameter in mm		Rated holding force in daN		kg
Length	Width	Height	Main prism	Secondary prism	Main prism	Secondary prism	Weight
80	80	80	10 - 25	8 - 15	12	10	3.5
125	125	125	10 - 40	10 - 26	30	12,5	14.0
180	180	180	14 - 50	14 - 50	40	30	37.0



ORDERING EXAMPLE

Designation SAV no. - length
 Permanent magnetic clamping block SAV 242.31 - 180