

SAV 434.02**PRECISION RADIUS DRESSER**

For profiling grinding wheels

**APPLICATION**

The radius dressing unit can be used to profile grinding wheels with concave and convex radii in combination with tangent bevels.

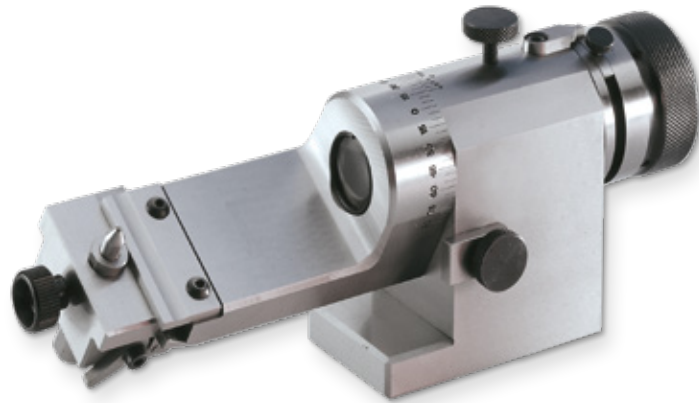
DESIGN

Finished on all sides, with limit stops and a magnifying sight glass in the spindle. The swivel arm features a scale. The radius movement is limited by adjustable stops. The slider with the dressing diamond is attached to the swivel arm with a dovetail structure. The dressing diamond is set with gauge blocks. A fine-adjustment screw on the diamond holder can be used to move the diamond into the correct position.

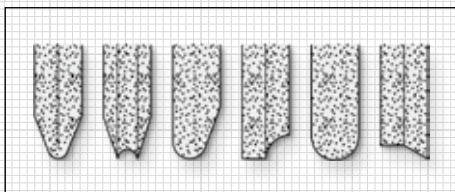
ACCESSORIES

Dressing diamond SAV 401.01 - K 06

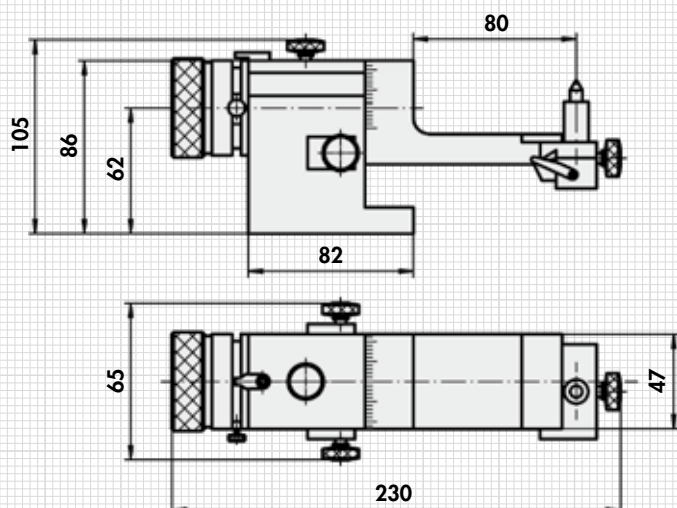
Available subject to a surcharge.



Axis height	in mm	62
Max. concave dressing radius	in mm	26
Max. concave dressing radius	in mm	16
Max. grinding wheel \varnothing	in mm	200
Opening for diamond	in mm	6
Adjustment path	in mm	± 15
Weight	in kg	4.1



Examples for profiled grinding wheels

**ORDERING EXAMPLE**

Designation	SAV no.
Precision radius dresser	SAV 434.02