

SAV 245.05

PRECISION SINE TABLES

Swivelling around transverse axis, low design



DESIGN

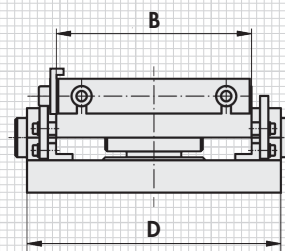
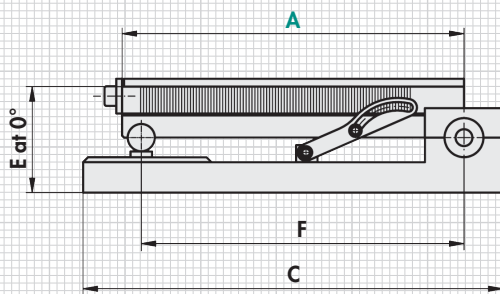
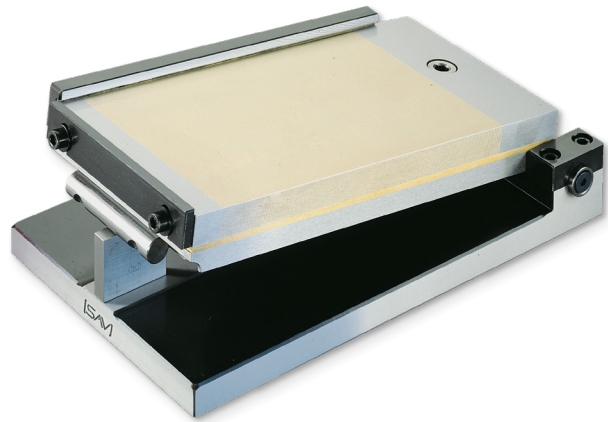
With sine table base unit made of steel. Hardened, burnished and precision-ground. Maximum precision with extremely flat design. Standard design with permanent magnetic chuck. On/off control from above. Sine tables are delivered in a wooden storage box. With sine table with degrees/minutes in mm, precision length stop and transverse stop bar.

APPLICATION

The angles are determined using the gauge blocks using the sinusoidal principle. Clamping is achieved with the upper bearing shell halves.

TECHNICAL DATA

- Angle accuracy: ± 5 arc sec
- Plane parallelism: $\pm 0.005/100$ mm
- Gauge block at 0°: 3 mm
- Swivelling range: 0° to 30°
- Rated holding force: 80 N/cm²
- Pole pitch: 1.9 mm
- Wear layer of the pole plate: 6 mm



mm						kg
A	B	C	D	E ₂ ⁰	F	Weight
175	100	190	140	67	160	8.5
255	130	270	170	66	240	14.0
300	150	315	190	69	285	20.5
350	150	365	190	69	335	27.5
400	200	415	240	68	385	42.0
450	150	465	190	69	435	35.0

Design with flushing holes available (surcharge applies).

ORDERING EXAMPLE

Designation SAV no. - A
 Precision sine table SAV 245.05 - 450