

SAV 245.44

MAGNETIC BLOCKS with scale
Swivelling around centre axis to both sides



DESIGN

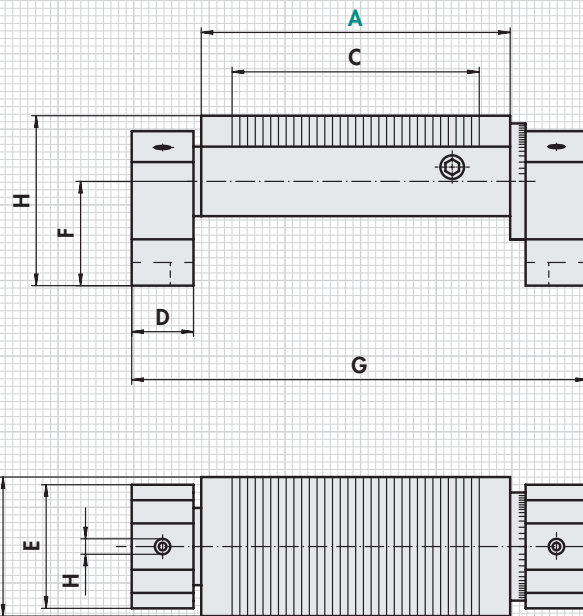
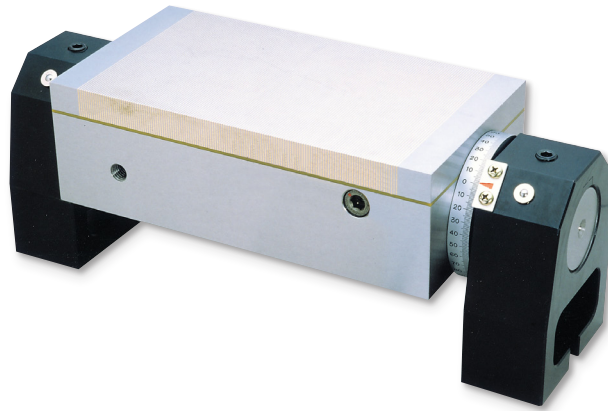
Sturdy design. Readout from degree scale.
Swivelling with manual lever. Switchable permanent magnet with fine pole pitch $P = 1.9 \text{ mm}$, swivelling through.

APPLICATION

Easy alignment using degree scale or a sine bar.

TECHNICAL DATA

- Swivelling range: -90° to $+90^\circ$
- Plane parallelism: $\pm 0.005/100 \text{ mm}$
- Rated holding force: 90 N/cm^2
- Magnetic field height: 6 mm
- Wear layer of the pole plate: 8 mm



| mm | | | | | | | | kg |
|-----|-----|-----|----|-----|----|-----|-----|--------|
| A | B | C | D | E | F | G | H | Weight |
| 175 | 100 | 146 | 50 | 100 | 95 | 293 | 145 | 18.0 |
| 250 | 100 | 206 | 50 | 100 | 95 | 365 | 125 | 23.0 |
| 300 | 150 | 256 | 50 | 100 | 95 | 418 | 128 | 36.0 |
| 350 | 150 | 306 | 50 | 100 | 95 | 468 | 145 | 40.0 |
| 450 | 150 | 406 | 50 | 100 | 95 | 568 | 145 | 50.0 |

ORDERING EXAMPLE

| | |
|----------------------------|----------------------|
| Designation | SAV no. - A x B |
| Magnetic block, swivelling | SAV 245.44 - 450x150 |