

**SAV 235.72**

**PRECISION SINE TABLES**

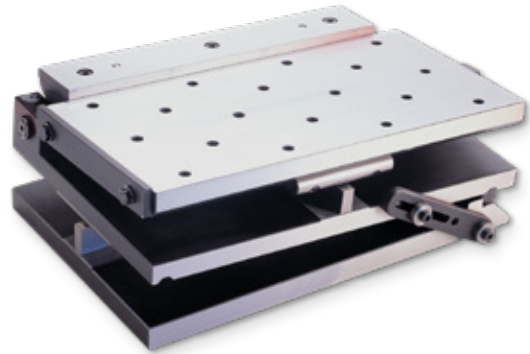
Swivelling around longitudinal and transverse axis

**DESIGN**

Swivelling around longitudinal and transverse axis. Sine table base unit made of steel. Hardened, burnished and precision-ground. Swivel plate designed with tapped holes M8 (G). From size 400 x 200 mm available with T-grooves (T) (subject to a surcharge).

Mechanical adjustment gear alternatively available (subject to a surcharge.) This increases the height by approx. 40 mm at 0° swivel angle for each axis.

Delivered in a wooden storage box, up to and including size 400 x 200 mm. With sine table with degrees/minutes in mm.

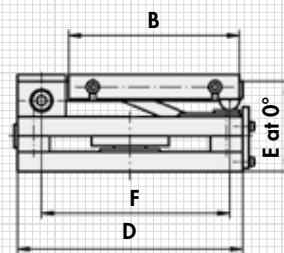
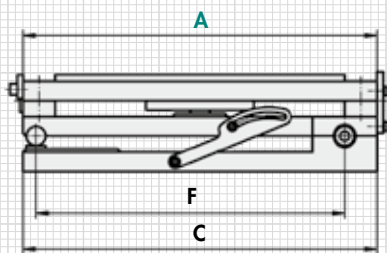


**TECHNICAL DATA**

- Angle accuracy:  $\pm 5''$
- Plane parallelism:  $\pm 0.005/100$  mm
- Gauge block at 0°: 3 mm
- Swivelling range, long axis: 0° to 45°
- Swivelling range, short axis: 0° to 30°

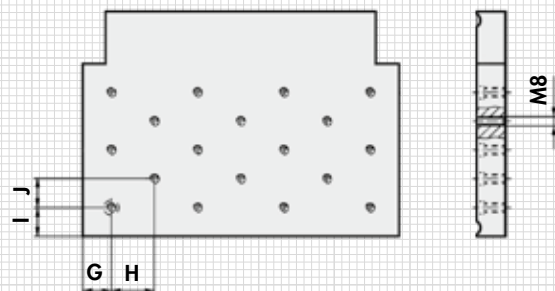
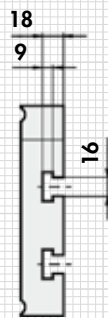
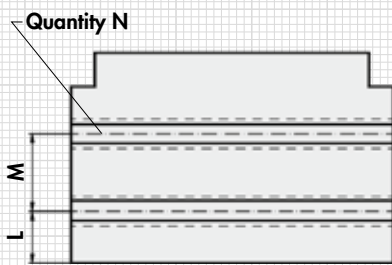
**APPLICATION**

The angles are determined using the gauge blocks using the sinusoidal principle. Suitable for workpieces with two work levels. Clamping is achieved with a fastening brace at the side and the upper bearing shells.



Pole plate for version with T-grooves (T) from size 400

Pole plate for design with tapped holes (G)



mm													kg
A	B	C	D	E <sub>1</sub> <sup>0</sup>	F	G	H	I	J	L	M	N	Weight
160	160	160	205	75	175 / 145	20	20	20	20	-	-	-	12.0
250	150	250	195	80	165 / 220	25	25	25	25	-	-	-	17.5
350	150	350	195	96	165 / 315	25	25	25	25	-	-	-	36.0
400	200	400	245	96	215 / 365	25	25	25	25	50	100	2	52.0
450	300	450	345	96	315 / 415	25	25	25	25	50	100	3	84.0

**ORDERING EXAMPLE**

Designation	SAV no. - A - version
Precision sine table	SAV 235.72 - 450 - G