

SAV 240.09

HOLDING MAGNETS

With h6 seat (bar magnet)

DESIGN

Brass magnet housing with integrated sandwich magnet system.

Max. service temperature: 200 °C.

MAGNET MATERIAL

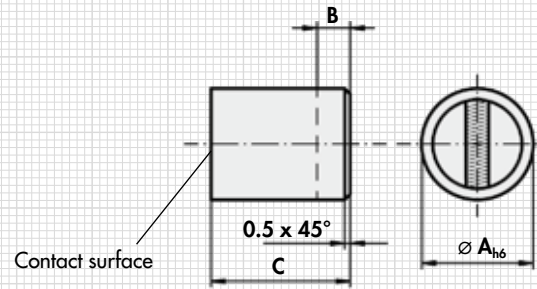
SmCo₅

FASTENING OPTION

Pressing, glueing.



Type	mm				Rated holding force	kg
	A _{h6}	B ¹⁾	C	D ²⁾		
MH 9 - 01	6	10	20	1.5	8	0.004
MH 9 - 02	8	10	20	1.5	22	0.008
MH 9 - 03	10	8	20	2	40	0.012
MH 9 - 04	13	6	20	2.5	60	0.020
MH 9 - 05	16	2	20	3	125	0.032
MH 9 - 06	20	5	25	4	230	0.060
MH 9 - 07	25	7	35	5	400	0.140
MH 9 - 08	32	5	40	6	600	0.265



ORDERING EXAMPLE

Designation SAV no. - type
 Holding magnet SAV 240.09 - MH 9 - 04

NOTE

¹⁾ Bar magnets can be shortened at the rear end by dimension B without reducing the holding force.

²⁾ In case of changes to the contact surface, no more than dimension B may be removed, as otherwise the holding force decreases greatly.