

SAV 240.12

FLAT POT MAGNETS

Hole with counterbore

DESIGN

Strong magnet with hole and counterbore.

Surface with wrinkle paint finish, red.

Max. service temperature:

- 100 °C for paint

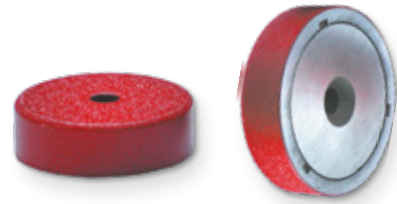
- 400 °C for magnet material

MAGNET MATERIAL

AlNiCo

FASTENING OPTION

Screws



Type	mm			N	kg
	A	B	C	Rated holding force	Weight
MH 12 - 19	19	3.5	8	25	0.017
MH 12 - 29	29	4.7	9	50	0.044
MH 12 - 38	38	4.7	11.1	80	0.105

ORDERING EXAMPLE

Designation SAV no. - type

Flat pot magnet SAV 240.12 - MH 12 - 38

