

SAV 240.13

BUTTON MAGNETS

Divided contact surface, with through hole

DESIGN

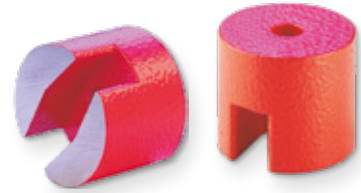
Divided contact surface, through hole.
 Surface with wrinkle paint finish, red.
 Max. service temperature:
 - 100 °C for paint
 - 400 °C for magnet material

MAGNET MATERIAL

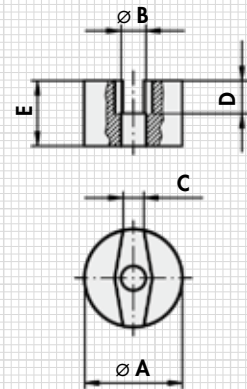
AlNiCo

FASTENING OPTION

Screws from the contact surface side



Type	mm					N	kg
	A	B	C	D	E	Rated holding force	Weight
MH 13 - 13	12.7	4.7	4	4.8	9.5	7	0.006
MH 13 - 19	19	5.2	5.5	6.4	12.7	19	0.019
MH 13 - 25	25.4	5.2	5.5	8	19.5	29	0.063
MH 13 - 32	32.5	7	8	12	25	66	0.105



ORDERING EXAMPLE

Designation	SAV no. - type
Button magnet	SAV 240.13 - MH 13 - 32