

SAV 240.14

HOLDING MAGNETS

With internal thread (bar magnet)

DESIGN

Bar magnet, smooth without fitting tolerance.
 NdFeB magnets have an up to approx. 50 % greater holding force than SmCo flat pot magnets. Shielded system.
 Seawater-resistant version (RF) available.
 Max. service temperature: 80 °C.

MAGNET MATERIAL

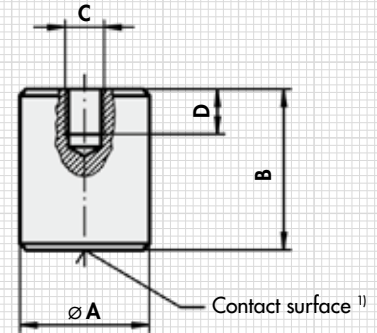
NdFeB

FASTENING OPTION

Screws



Type	mm				Rated holding force N	RF Holding force N	Weight kg
	A ±0.2	B ±0.2	C	D			
MH 14 - 06	6	20	M 3	5	6	1	0.003
MH 14 - 08	8	20	M 3	5	12	4	0.006
MH 14 - 10	10	20	M 4	7	24	8	0.010
MH 14 - 13	13	20	M 4	7	60	16	0.016
MH 14 - 16	16	20	M 4	7	90	18	0.025
MH 14 - 20	20	25	M 6	9	135	32	0.055
MH 14 - 25	25	35	M 6	9	190	73	0.135
MH 14 - 32	32	40	M 8	12	340	115	0.230



NOTE

¹⁾ In case of profiling or removing the contact surface, no more than 2 mm may be removed, as otherwise the holding force decreases greatly.

ORDERING EXAMPLE

Designation SAV no. - type - stainless version
 Holding magnet SAV 240.14 - MH 14 - 32 - RF