

SAV 240.15

POT MAGNETS

With forcing screw¹⁾

DESIGN

Strong rated holding force, the handle facilitates removal from the material. Surface with wrinkle paint finish, red.

Max. service temperature:

- 100 °C for paint
- 400 °C for magnet material

MAGNET MATERIAL

AlNiCo/hard ferrite

FASTENING OPTION

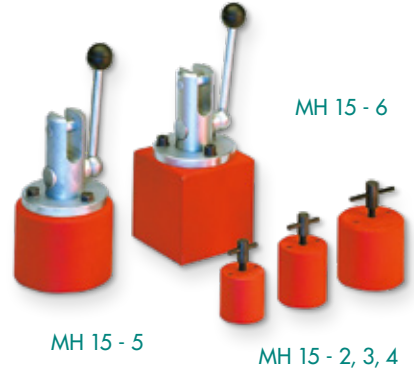
Screws

APPLICATION

As a holding magnet, for light to medium transport work.

NOTE

¹⁾ MH 15 - 1 without forcing screw, but only with T-bolt.

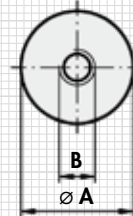
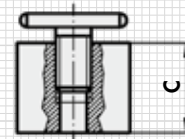


Type	mm			Rated holding force N	Permanent magnet material	Weight kg
	A	B	C			
MH 15 - 1 ¹⁾	50	M 8	40	270	AlNiCo	0.60
MH 15 - 2	70	M 8	63	650	AlNiCo	2.02
MH 15 - 3	75	M 12	45	400	Hard ferrite	2.20
MH 15 - 4	44	M 8	44	200	AlNiCo	0.52
MH 15 - 5	102	M 8	75	1700	AlNiCo	6.40
MH 15 - 6	95	M 8	95	2200	AlNiCo	7.70

ORDERING EXAMPLE

Designation SAV no. - type

Pot magnet SAV 240.15 - MH 15 - 4



Shown without T-bolt