

SAV 240.17

HOLDING MAGNETS

With h6 seat (bar magnet)

DESIGN

Brass magnet housing with integrated sandwich magnet system.

Max. service temperature: 80 °C.

FASTENING OPTION

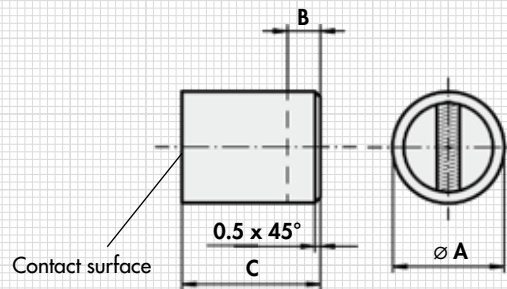
Pressing, glueing.

MAGNET MATERIAL

NdFeB



Type	mm				Rated holding force N	Weight kg
	A _{h6}	B ¹⁾	C	D ²⁾		
MH 17 - 01	6	10	20	1.5	10	0.004
MH 17 - 02	8	10	20	1.5	22	0.008
MH 17 - 03	10	8	20	2	45	0.012
MH 17 - 04	13	6	20	2.5	70	0.020
MH 17 - 05	16	2	20	3	150	0.032
MH 17 - 06	20	5	25	4	300	0.060
MH 17 - 07	25	7	35	5	500	0.140
MH 17 - 08	32	5	40	6	720	0.265



ORDERING EXAMPLE

Designation SAV no. - type
Holding magnet SAV 240.17 - MH 17 - 04

NOTE

¹⁾ Bar magnets can be shortened at the rear end by dimension B without reducing the holding force.

²⁾ In case of changes to the contact surface, no more than dimension B may be removed, as otherwise the holding force decreases greatly.