

SAV 240.50

MAGNETIC CORES MADE OF SmCo₅
With high rated holding force

DESIGN

The holding magnets are manufactured by sintering. The magnets are hard and brittle and can only be machined while demagnetised.

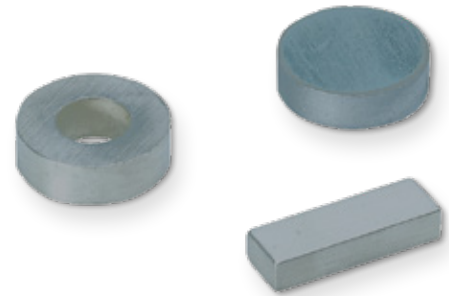
Max. service temperature: 200 °C
Remanence: approx. 850 mT to 930 mT

MAGNET MATERIAL

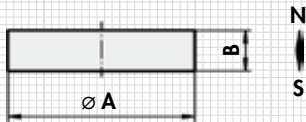
Samarium cobalt, SmCo₅, unshielded, anisotropic

FASTENING OPTION

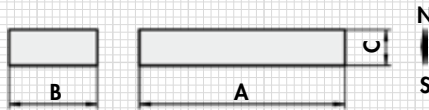
Glueing, pressing



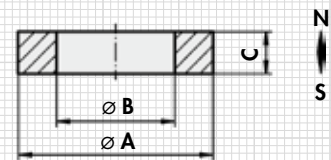
Disc magnets MK 40:



Cuboid magnets MK 41:



Ring magnets MK 42:



Disc magnets MK 40:

Type	mm		kg
	A	B	
MK 40 - 01 - 03	1.5	3	1
MK 40 - 02 - 04	1.8	4	1
MK 40 - 02 - 02	2	2	1
MK 40 - 02 - 10	2	10	0.3
MK 40 - 03 - 02	3	2	0.1
MK 40 - 04 - 02	4	1.5	0.2
MK 40 - 04 - 05	4	5	0.5
MK 40 - 05 - 02	5	2	0.3
MK 40 - 05 - 03	5	3	0.5
MK 40 - 05 - 05	5	5	0.8
MK 40 - 06 - 02	6	2	0.5
MK 40 - 06 - 04	6	4	1.0
MK 40 - 06 - 10	6	10	2.0
MK 40 - 07 - 03	7	3	1.0
MK 40 - 08 - 05	8	5	2.0
MK 40 - 10 - 03	10	3	2.0
MK 40 - 10 - 05	10	5	3.0
MK 40 - 10 - 10	10	10	7.0
MK 40 - 15 - 05	15	5	7.0
MK 40 - 15 - 10	15	10	15.0
MK 40 - 20 - 05	20	5	13.0
MK 40 - 25 - 08	25	8	33.0
MK 40 - 25 - 15	25	15	62.0

Cuboid magnets MK 41:

Type	mm			kg
	A	B	C	
MK 41 - 02 - 02 - 01	2	2	1	0.1
MK 41 - 03 - 03 - 02	3	3	2	0.2
MK 41 - 04 - 04 - 02	4	4	2	0.3
MK 41 - 05 - 05 - 03	5	5	3	0.6
MK 41 - 05 - 05 - 02	5	4.5	1.5	0.3
MK 41 - 06 - 03 - 01	6	3	1	0.2
MK 41 - 10 - 07 - 02	10	7	2	1.0
MK 41 - 10 - 10 - 03	10	10	3	3.0
MK 41 - 12 - 09 - 03	12	9	2.5	2.0
MK 41 - 15 - 15 - 06	15	15	6	11.0
MK 41 - 16 - 12 - 03	16	12	3	5.0
MK 41 - 18 - 16 - 04	18	16	4	10.0
MK 41 - 26 - 21 - 05	26	21	5	23.0
MK 41 - 30 - 10 - 06	30	10	6	15.0
MK 41 - 30 - 20 - 10	30	20	10	50.0
MK 41 - 32 - 27 - 06	32	27	6	44.0

Ring magnets MK 42:

Type	mm			kg
	A	B	C	
MK 42 - 20 - 10 - 05	20	10	5	0.4
MK 42 - 25 - 12 - 08	25	12	8	0.4
MK 42 - 30 - 10 - 10	30	10	10	0.5
MK 42 - 40 - 15 - 10	40	15	10	0.9

ORDERING EXAMPLE

Designation SAV no. - type
Magnetic core SAV 240.50 - MK 40 - 01 - 03