

**SAV 532.03**

**PERMANENT MAGNETIC SHEET FANNERS**

For separating sheets

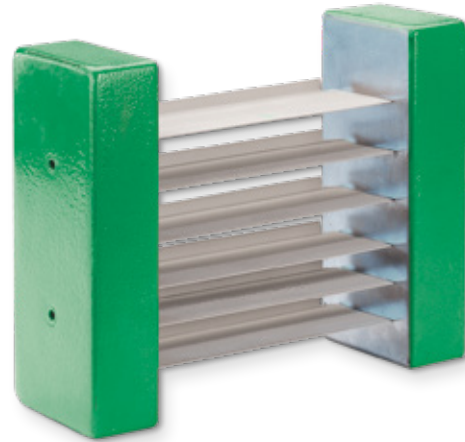
**APPLICATION**

For separating stacked iron and steel sheets during insertion tasks into metal processing machines. The sheets are placed between the magnetic floaters and magnetised with the same poles. This causes the sheets to repel each other and float freely, which makes them easy to grip.

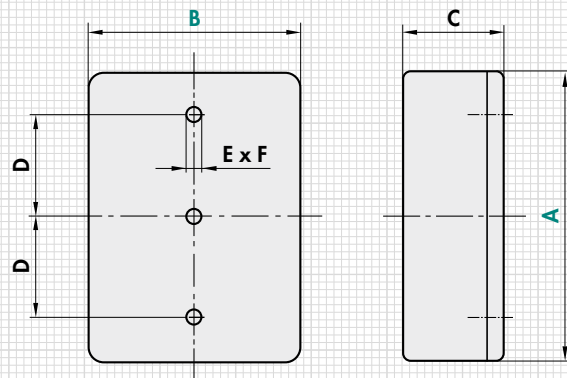
To prevent jamming of the sheets, the magnet floaters must be positioned so that an air gap of 1 to 2 mm is created.

**DESIGN**

The strong permanent magnets are installed in a robust steel housing. The tapped holes provided allow the unit to be fastened to fixtures. Delivered individually.



mm							kg
A	B	C	D	E	F	For sheet thickness up to	Weight
75	73	28	50	2	M 8	0.7	1.0
275	73	28	200	2	M 8	0.7	4.0
342	73	28	250	2	M 8	0.7	5.0
208	103	28	100	2	M 8	1	5.0
308	103	28	200	2	M 8	1	7.0
342	103	28	250	2	M 8	1	8.0
143	104	49	100	2	M 8	2	6.0
277	104	49	200	2	M 8	2	11.0
310	104	49	200	2	M 8	2	12.0
143	155	47	100	2	M 8	3	8.0
210	155	47	150	2	M 8	3	12.0
310	155	47	200	2	M 8	3	18.0
411	155	47	150	3	M 8	3	24.0
511	155	47	200	3	M 8	3	29.0
277	179	88	200	2	M 12	4	34.0
400	179	88	150	3	M 12	4	50.0
344	279	94	100	3	M 12	6	71.0
545	279	94	150	4	M 12	6	112.0
612	279	94	150	4	M 12	6	126.0
813	279	94	200	4	M 12	6	168.0



The floater height is selected so that the sheet stacking height is approx. half of the floater height. If using the stated maximum sheet thickness, a sheet area of approx. 30 dm<sup>2</sup> can be spread per floater. The plate area is reduced to approx 15 dm<sup>2</sup> for thick, oily sheets and several floaters are required.

**ORDERING EXAMPLE**

Designation	SAV no. - A x B
Permanent magnetic sheet fanner	SAV 532.03 - 813 x 279