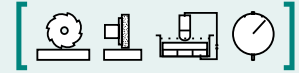


SAV 220.31

PERMANENT MAGNETIC PALLETES

True transverse pole pitch $P = 6 \text{ mm}$



APPLICATION

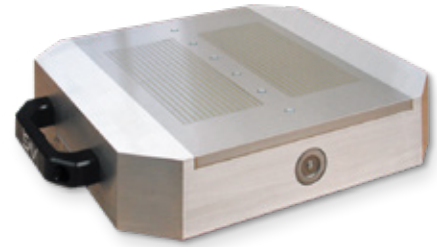
In conjunction with zero-point workholding systems.
Can be adapted to most systems.

MATERIAL

Aluminium main body with steel
1.0037/1.4571 pole plate

TECHNICAL DATA

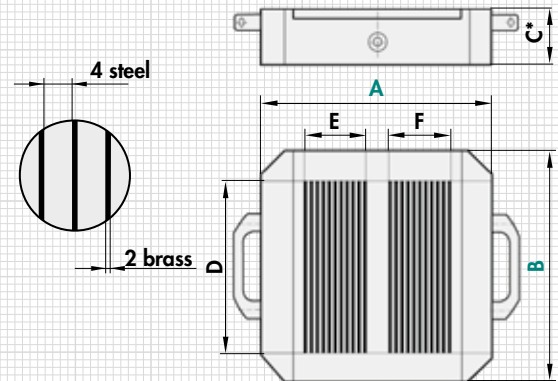
- Low weight and high rated holding force
- Wear layer of the pole plate: 2 mm
- Rated holding force: 120 N/cm²
- Tapped holes for stop bars and stop brackets possible
- Low magnetic field
- Clamping holes on the top surface on request



mm						Qty.	kg
A	B	C*	D	E	F	Control points	Weight
240	240	60	126.0	-	-	1	18.0
280	280	66	166.0	80.0	80.0	2	21.5
320 ¹⁾	320	65	206.0	80.0	80.0	1	25.0/36.0
320 ¹⁾	320	65	234.0	123.0	123.0	2	36.0

* Exact dimension is determined through the reference system.

¹⁾ With 45° chamfers on the corners for pallet changer



ORDERING EXAMPLE

Designation SAV no. - A x B - control points - reference system - adaptation
Permanent magnetic pallet SAV 220.31 - 320 x 320 - 2 - reference system - adaptation