**APPLICATION**

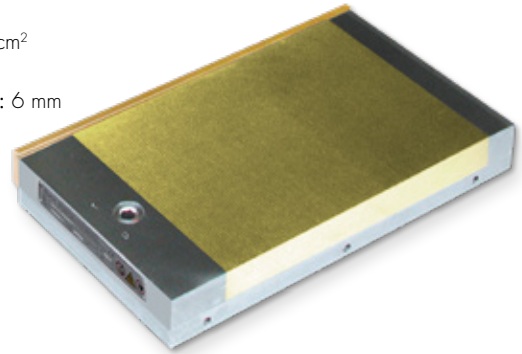
Primarily for EDM and grinding.
Suitable for thin parts.

DESIGN

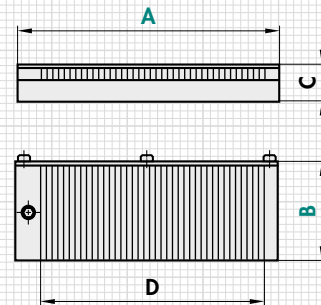
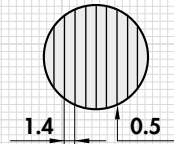
Extremely low height and weight-optimised.
ON/OFF control from above. Standard version without flushing hole. Pole divisions made of 0.5 mm brass/1.4 mm steel. Available with flushing hole(s) (surcharge applies). Available with adaptation for zero-point workholding system. Crosswise and lengthwise stop bar. Attached with clamps.

TECHNICAL DATA

- Rated holding force: 80 N/cm²
- Magnetic field height: 6 mm
- Wear layer of the pole plate: 6 mm



mm				kg
A	B	C ^{+0.5 -2}	D	Weight
175	100	32,0	120	4.5
250	150	34,5	194	10.0
300	150	34,5	245	12.5
350	150	34,5	295	14.0
400	200	35,0	344	23.0

**ORDERING EXAMPLE**

Designation	SAV no. - A x B
Permanent magnetic chuck	SAV 243.07 - 350 x 150