

**SAV 244.01**

**PERMANENT MAGNETIC CIRCULAR CHUCKS**

With very fine parallel pole pitch  $P = 1.9$  mm



**APPLICATION**

For chucking small and thin to medium workpieces.

**DESIGN**

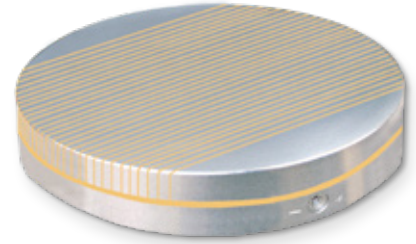
Powerful magnet system with neodymium magnets and low magnetic field height. Magnetic force continuously adjustable.

Available with flange on request (see SAV 248.90 to 248.94).

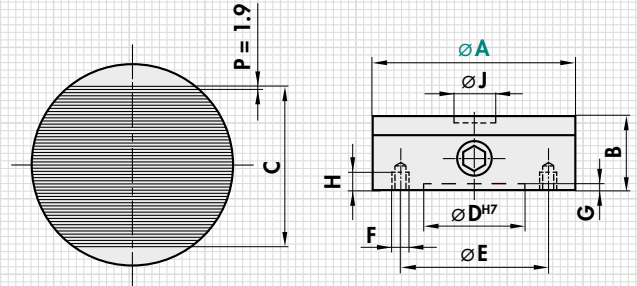
Size J (diameter and depth) machining is possible at the centre of the pole plate. For the other sizes, a 5 mm wearing thickness applies across the entire surface. Concentric lines facilitate visual alignment of the workpieces.

**TECHNICAL DATA**

- Rated holding force: up to  $\varnothing$  160: 60 N/cm<sup>2</sup>  
from  $\varnothing$  200: 90 N/cm<sup>2</sup>
- Magnetic field height: 8 mm
- Wear thickness of the top surface: 5 mm
- Geometrically balanced: Quality G 6.3



mm									kg
A	B <sub>0</sub>	C	D	E	F	G	H	J	Weight
100	50	71	60	85	4 x M8	4	10	20x14	3.0
130	50	99	90	115	4 x M8	4	10	20x14	5.0
150	50	105	110	132	4 x M8	4	10	24x5	7.0
160	57	116	125	142	4 x M8	4	16	24x5	9.0
200	57	153	150	180	4 x M8	4	16	200x5	15.0
250	57	192	200	232	4 x M8	4	16	250x5	20.0
300	62	227	250	285	4 x M8	4	16	300x5	31.0



**ORDERING EXAMPLE**

Designation	SAV no. - A
Permanent magnetic circular chuck	SAV 244.01 - 150