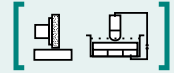


**SAV 248.91**

**SHORT TAPERED FLANGES**

With stud bolts and bayonet disc



**APPLICATION**

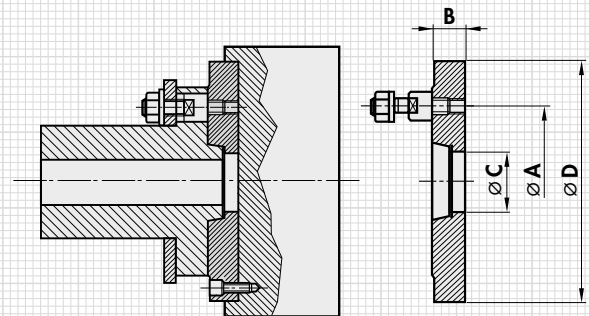
For flanging on round magnets or other workholding fixtures. For spindle heads as per [DIN 55027](#) and ISO 702/III.

**DESIGN**

Soft steel flanges as per DIN and ISO standards. Machined on the spindle side. With stud bolts and collar nuts. The magnet-side/chuck-side adaptation is carried out as required (please state diameter and hole pattern when ordering). On customer request, we supply our round magnets already fully flanged.

Spindle head size	$\left[ \begin{array}{c} \text{mm} \\ \text{A} \end{array} \right]$	$\left[ \begin{array}{c} \text{Qty.} \\ \text{No. of stud bolts} \end{array} \right]$
4	85.0	3
5	104.8	4
6	133.4	4
8	171.4	4
11	235.0	6
15	330.2	6

Dimensions **B**, **C** and **D** as well as the fastening hole circle as per requirements or your specifications.



**ORDERING EXAMPLE**

**Designation** SAV no. - spindle head size - standard  
 Short tapered flange with bayonet fastening SAV 248.91 - 15 - DIN 55027 and dimensions