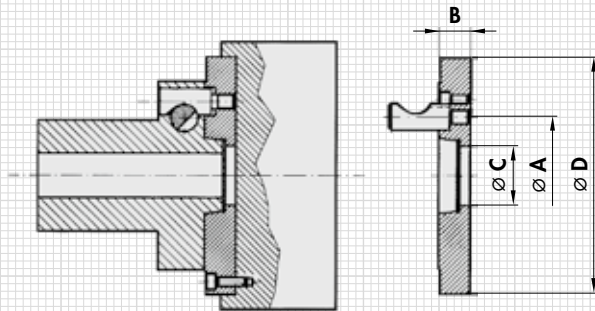
**APPLICATION**

For flanging on round magnets or other workholding fixtures. For spindle heads as per DIN 55029, ISO 702/II, ASA b 5.9 D1.

DESIGN

Soft steel flanges as per DIN, ISO and ASA standards. Machined on the spindle side. The magnet-side/chuck-side adaptation is carried out as required (please state diameter and hole pattern when ordering). On customer request, we supply our round magnets already fully flanged.

Spindle head size	[mm]	Qty.
	A	No. of clamping cams
4	82.6	3
5	104.8	6
6	133.4	6
8	171.4	6
11	235.0	6
15	330.2	6

**ORDERING EXAMPLE**

Designation SAV no. - spindle head size
 Short tapered flange with cam lock fastening SAV 248.92 - 15

Dimensions **B**, **C** and **D** as well as the fastening hole circle as per requirements or your specifications.