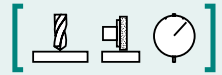


SAV 242.21**PERMANENT MAGNETIC V BLOCKS**

Four magnetic contact surfaces

**APPLICATION**

Positioning

DESIGN

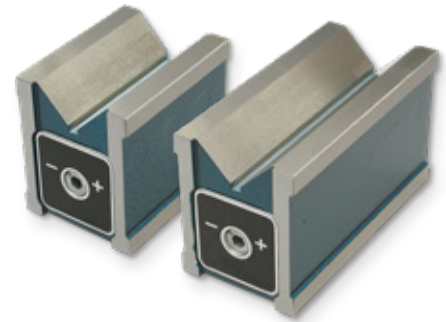
4 magnetic contact surfaces (top and bottom and 2 face sides) which are switched on and off together.

2 opposite control points including removable key. Wooden storage box SAV 539.02 - HK2 available (surcharge applies).

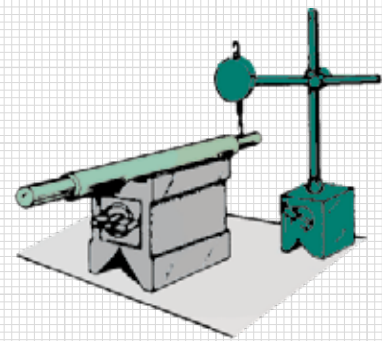
Available individually (**S**) and in pairs (**P**). The prism pair is ground to the same height.

TECHNICAL DATA

- Plane parallelism: < 0.01 mm
- Prism angle: 90°



Length	Width	Height	mm		daN	kg
			Workpiece diameter	Width of large prism	Rated holding force	Weight
80	60	73	6 - 50	38	30	2.0
125	60	73	6 - 50	38	45	3.3

**ORDERING EXAMPLE**

Designation	SAV no. - length
Permanent magnetic V block	SAV 242.21 - 125