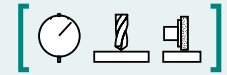


SAV 242.22**PERMANENT MAGNETIC V BLOCKS**

Individually and in pairs

**APPLICATION**

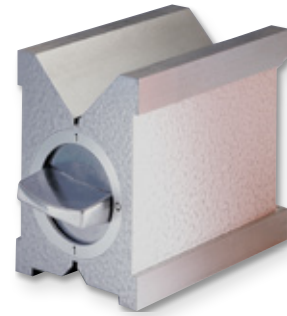
Positioning

DESIGN

2 magnetic contact surfaces which are switched on and off together (large prism and opposite prism). Available individually (**S**) and in pairs (**P**). Wooden storage box [SAV 539.02-HK2](#) (for S) and [SAV 539.04-HK4](#) (for P) (surcharge applies).

TECHNICAL DATA

- Perpendicularity: 0.004 mm
- Parallelism: 0.004 mm
- Prism angle: 90°



mm			daN		kg	
Length	Width	Height	Workpiece diameter	Rated holding force, prism	Rated holding force, surface	Weight
80	67	96	6 - 66	40	90	2.9
100	70	96	6 - 70	40	120	3.8

ORDERING EXAMPLE

Designation SAV no. - length - individual or pair
 Permanent magnetic V block SAV 242.22 - 100 - S