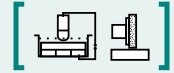


SAV 243.15

PERMANENT MAGNETIC BEAMS

With transverse pole pitch top and bottom



APPLICATION

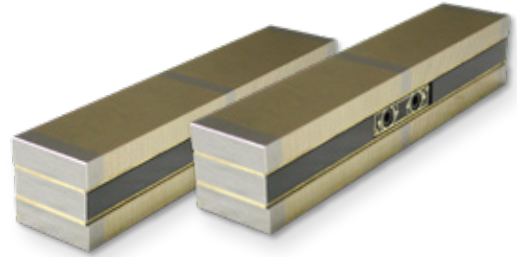
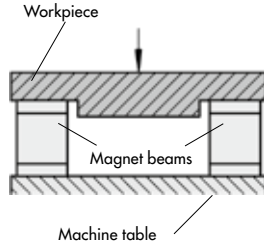
As a workholding fixture for holding workpieces on EDM machines and machine tools, for jigs, etc.

DESIGN

Two opposite chucking areas, separate switching. Only available in pairs. Low magnetic field due to fine pole pitch.

TECHNICAL DATA

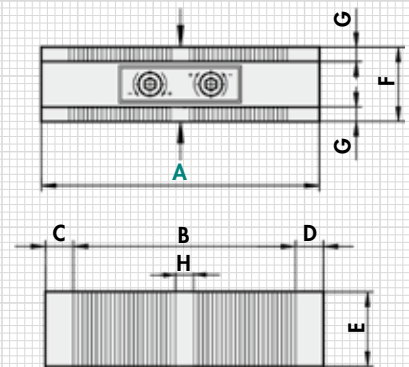
- Parallelism: 0.02 mm
- Pole pitch: 1.3 mm
- Magnetic field height: 6 mm
- Wear layer of the pole plate: 6 mm



mm								N	kg
A	B	C	D	E	F	G	H	Rated force	Weight
125	98	13.5	13.5	52	50	15	-	300	2.5
180	153	13.5	13.5	52	50	15	11	400	3.6
250	225	12.5	12.5	52	50	15	11	590	5.0

ORDERING EXAMPLE

Designation	SAV no. - A
Permanent magnetic beam	SAV 243.15 - 125



2 magnetic chucking areas