

**SAV 245.01**

**PRECISION SINE TABLES**

Swivelling around the longitudinal axis



**DESIGN**

With sine table base unit made of steel. Hardened, burnished and precision-ground. Base plate alignment edge parallel to the stop bar. Maximum precision with flat design. Standard design with permanent magnetic chuck.

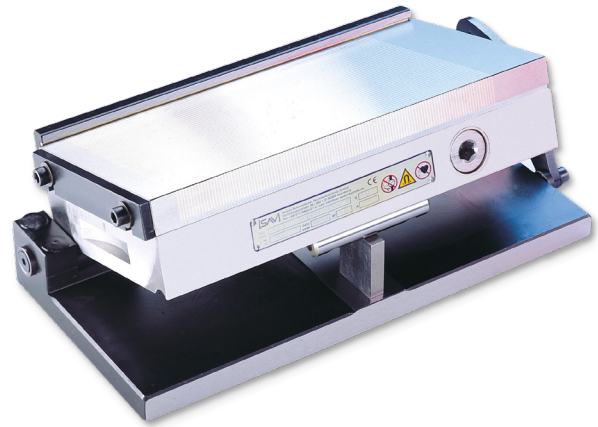
The sine tables are delivered in a wooden storage box, up to and including size 400 x 200 mm.

With sine table with degrees/minutes in mm, precision length stop and transverse stop bar.

**APPLICATION**

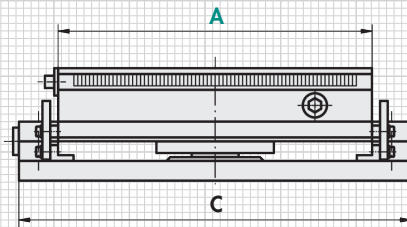
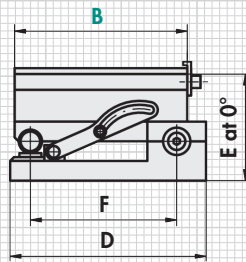
The angles are determined using the gauge blocks using the sinusoidal principle.

Clamping is achieved with the upper bearing shell halves.



**TECHNICAL DATA**

- Angle accuracy:  $\pm 5$  arc sec
- Plane parallelism:  $\pm 0.005/100$  mm
- Gauge block at 0°: 3 mm
- Swivelling range: 0° to 45°
- Rated holding force: 90 N/cm<sup>2</sup>
- Pole pitch: 1.9 mm
- Magnetic field height: 6 mm
- Wear layer of the pole plate: 8 mm



mm						kg
A	B	C	D	E <sub>2</sub> <sup>0</sup>	F	Weight
150	150	190	165	85	135	12.0
175	100	215	115	80	85	10.0
250	100	290	115	80	85	16.0
255	130	295	145	80	115	19.0
250	150	290	165	83	135	20.5
300	150	340	165	86	135	26.5
300	200	340	215	86	185	35.0
350	150	390	165	85	135	35.0
400	200	440	215	85	185	52.0
500	250	540	265	96	235	84.0
600	300	660	317	117	275	121.0

Other designs and dimensions on request. Also available with electro permanent magnet or other magnet systems.

All standard sized of the permanent magnetic chucks SAV 243.01 (chapter 1.2.1) are available as a sine table.

Design with flushing holes for EDM available (surcharge applies).

**ORDERING EXAMPLE**

Designation	SAV no. - A x B
Precision sine table	SAV 245.01 - 300 x 150