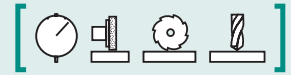


**SAV 245.08**

**PRECISION SINE TABLES** with amplified holding force  
Swivelling around longitudinal and transverse axis



**DESIGN**

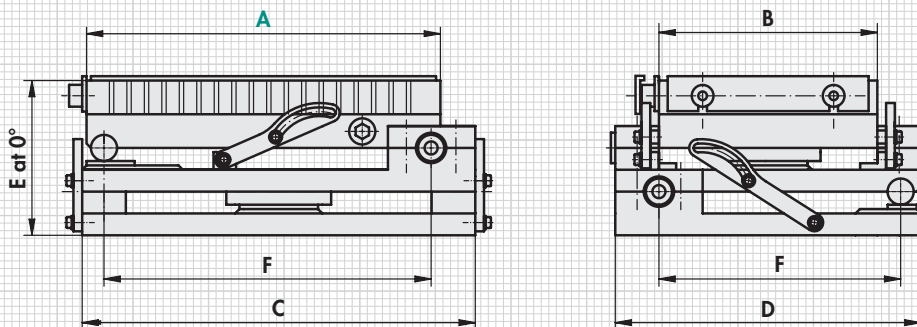
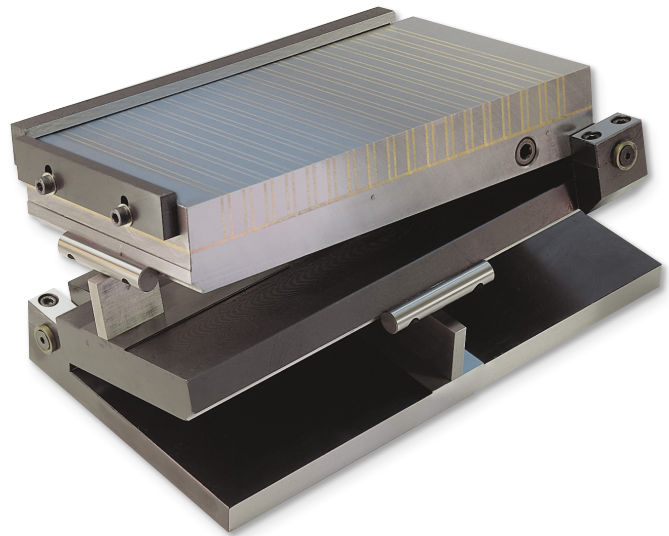
Swivelling around longitudinal and transverse axis. With sine table base unit made of steel. Hardened, burnished and precision-ground. Maximum precision with flat design. Standard version with permanent magnetic chuck SAV 243.11. Delivered in a wooden storage box. With sine table with degrees/minutes in mm, precision length stop and transverse stop bar.

**APPLICATION**

The angles are determined using the gauge blocks using the sinusoidal principle. Clamping is achieved with a fastening brace at the side and the upper bearing shells.

**TECHNICAL DATA**

- Angle accuracy:  $\pm 5$  arc sec
- Plane parallelism:  $\pm 0.005/100$  mm
- Gauge block at  $0^\circ$ : 3 mm
- Swivelling range, long axis:  $0^\circ$  to  $45^\circ$
- Swivelling range, short axis:  $0^\circ$  to  $30^\circ$
- Rated holding force:  $150 \text{ N/cm}^2$
- Pole pitch: 15 mm
- Magnetic field height: 12 mm
- Wear layer of the pole plate: 5 mm



mm						kg
A	B	C	D	$E_{-2}^0$	F	Weight
250	150	285	205	154	235/175	20.5
300	150	333	190	122	285/160	27.0
350	150	383	190	122	335/160	36.0
400	200	435	240	126	385/210	52.0

Other designs and dimensions on request. Also available with electro-permanent magnet or other magnet systems. All standard sized of the permanent magnetic chucks SAV 243.11 (chapter 1.2.1) are available as a sine table.

**ORDERING EXAMPLE**

Designation	SAV no. - A
Precision sine table	SAV 245.08 - 400