

**SAV 240.10**

**HOLDING MAGNETS**

High-energy magnets (flat pot magnets)

**DESIGN**

SmCo5 magnets have a 3 to 5 times higher holding force compared to conventional flat pot magnets. The magnets have a steel casing (shielded).

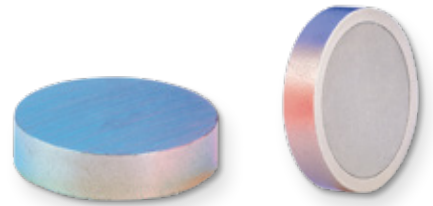
Max. service temperature: 200 °C.

**MAGNET MATERIAL**

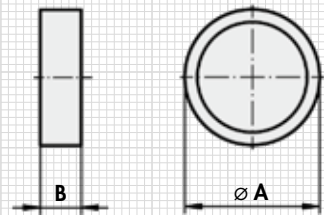
SmCo<sub>5</sub>

**FASTENING OPTION**

Pressing, glueing, casting



Type	mm		N	kg
	A ± 0.15	B ± 0.15	Rated holding force	Weight
MH 10 - 01	6	4.5	5	0.001
MH 10 - 02	8	4.5	11	0.002
MH 10 - 03	10	4.5	20	0.003
MH 10 - 04	13	4.5	40	0.005
MH 10 - 05	16	4.5	60	0.007
MH 10 - 06	20	6	90	0.015
MH 10 - 07	25	7	150	0.027
MH 10 - 08	32	7	220	0.044



**ORDERING EXAMPLE**

Designation SAV no. - type  
 Holding magnet SAV 240.10 - MH 10 - 08