

SAV 240.35

HOLDING MAGNETS

Stud with internal thread (flat pot magnet), extremely high rated holding force

DESIGN

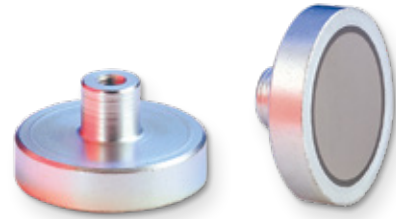
Shielded system, galvanised surface.
Max. service temperature: 200 °C.

FASTENING OPTION

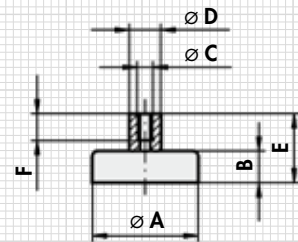
Screws

MAGNET MATERIAL

SmCo₅



Type	mm						Rated holding force N	Weight kg
	A ±0.2	B ±0.2	C	D	E	F		
MH 35 - 06	6	4.5	M 3	6	11.5	7	5	0.002
MH 35 - 08	8	4.5	M 3	6	11.5	7	11	0.002
MH 35 - 10	10	4.5	M 3	6	11.5	7	20	0.003
MH 35 - 13	13	4.5	M 3	6	11.5	7	40	0.005
MH 35 - 16	16	4.5	M 4	8	11.5	7	60	0.008
MH 35 - 20	20	6	M 4	8	13	7	90	0.016
MH 35 - 25	25	7	M 4	8	14	7	150	0.022
MH 35 - 32	32	7	M 5	10	15.5	8.5	220	0.040



ORDERING EXAMPLE

Designation	SAV no. - type
Holding magnet	SAV 240.35 - MH 35 - 20