

SAV 241.06

BAR MAGNETS

Pairs, rectangular and round cross-section

DESIGN

Surface with wrinkle paint finish, red, unshielded.

Max. service temperature:

- 100 °C for paint
- 400 °C for magnet material

MAGNET MATERIAL

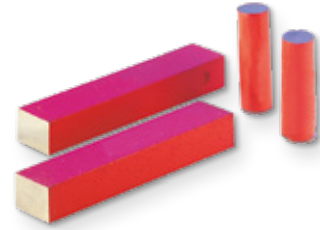
AlNiCo 500

FASTENING OPTION

Pressing, glueing.

NOTE

Supplied in pairs. Machining: grinding only.

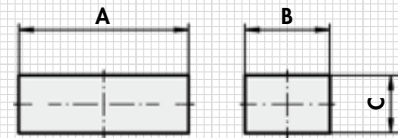


Rectangular bar magnets:

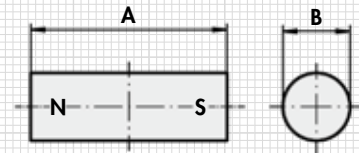
Type	mm			Weight kg
	A	B	C	
MH 630	20	10	5	0.005
MH 631	60	15	5	0.055
MH 632	50	15	10	0.063
MH 633	75	15	10	0.118
MH 634	101	15	10	0.174
MH 635	40	12.5	5	0.030
MH 636	60	12.5	5	0.036

Round bar magnets:

Type	mm		Weight kg
	A	B	
MH 620	10	4	0.001
MH 621	10	5	0.001
MH 622	10	6	0.001
MH 623	20	5	0.002
MH 624	20	6	0.003
MH 625	24	8	0.007
MH 626	30	10	0.018



Type MH 630 to type MH 636



Type MH 620 to type MH 626

ORDERING EXAMPLE

Designation SAV no. - type

Bar magnet SAV 241.06 - MH 635