

SAV 244.45

ELECTRO MAGNETIC CIRCULAR CHUCKS FOR CENTELESS SHOE GRINDING

With pot magnet system for large range of workpieces



Special round magnet for thin rings (rolling bearings).

DESIGN

- Extreme magnetic field for grinding a large range of workpieces
- Delivery with drivers upon agreement or adapted to existing drivers
- Spindle adaptation upon agreement
- On request with exchangeable pole plates for large chucking area
- For easy workpiece handling, easy to automate
- Internal cooling water feed possible
- Control and hand remote unit not in the scope of delivery

APPLICATION

- For grinding small rings with small workpiece contact area
- Eccentric workpiece chucking and positioning using stationary slide shoes for extremely low wall thickness fluctuation
- Easy changeover with universal workpiece drivers
- Universally suitable for large range of diameters
- For chucking workpieces up to 500 mm diameter
- Workpiece eccentric to the spindle
- Magnet for rotation, slide shoes (provided by customer) for precision

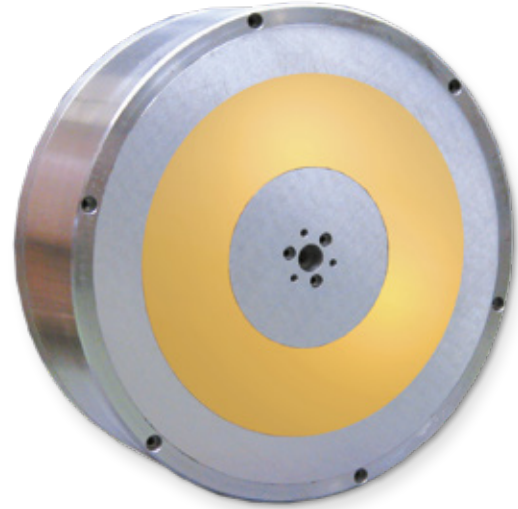
RATED VOLTAGE, RECOMMENDED

24 V DC up to 250 mm diameter

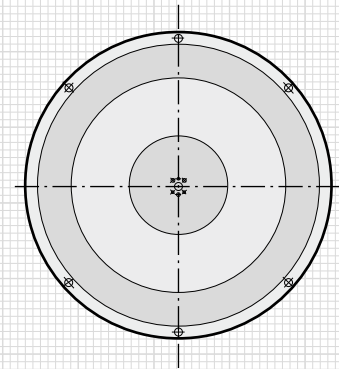
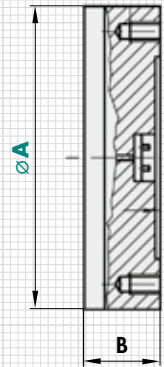
110 V DC over 250 mm diameter

SCOPE OF DELIVERY

- Larger round magnets are provided with threads for transport
- Standard electrical connection centrally on the rear side using terminals
- Control and hand remote unit not in the scope of delivery



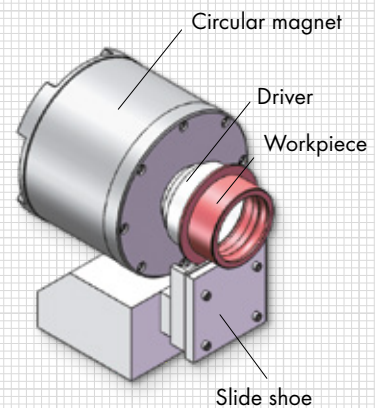
| mm | | kg | W | Type |
|-----|-----|--------|-------|---------|
| A | B | Weight | Power | Control |
| 150 | 130 | 23.0 | 25 | E 1 |
| 200 | 130 | 40.0 | 40 | E 1 |
| 250 | 160 | 80.0 | 62 | E 1 |
| 300 | 160 | 113.0 | 90 | E 4 |
| 400 | 180 | 225.0 | 140 | E 4 |
| 450 | 180 | 285.0 | 180 | E 4 |
| 500 | 200 | 390.0 | 250 | E 4 |



RECOMMENDED CONTROL AND CONTROL UNIT

| Type | Control | Hand remote unit |
|------|--------------------------|------------------|
| E 1 | SAV 876.10-S-T-24/7/230 | SAV 876.02-SE3 |
| E 4 | SAV 876.10-S-O-110/6/230 | SAV 876.02-SE3 |

Installation control units as per page 34.



ORDERING EXAMPLE

Designation SAV no. - A - rated voltage
 Electro magnetic circular chuck for centeless shoe grinding SAV 244.45 - 500 - 110 V