

SAV 243.77 - 55

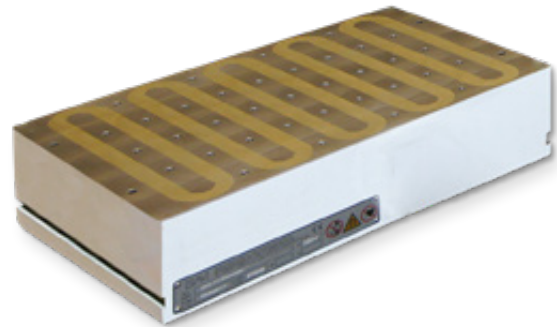
universelle Polteilung

NENNHAFTKRAFT

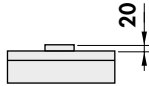
150 N/cm²

VERWENDUNG

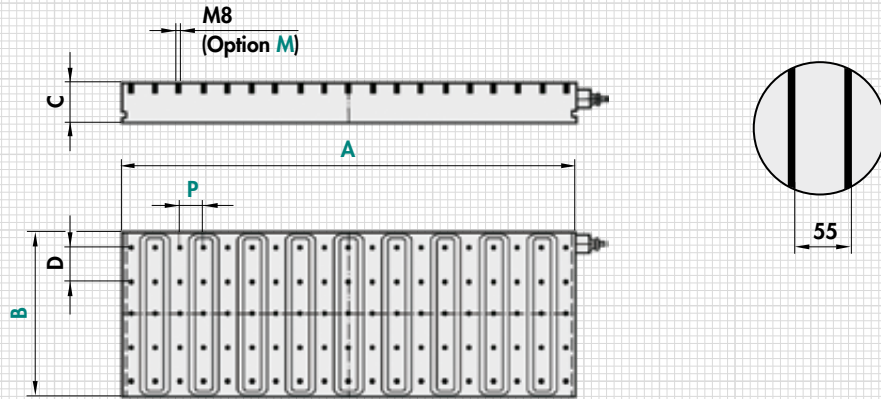
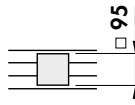
Für schwere Fräsbearbeitung.



- für Werkstücke:
min. Dicke = 20 mm



- für Werkstücke:
min. Größe = 95 x 95 mm



| mm | | | | | daN | Stück | | | kg | A |
|------|-----|------------------|----|----|----------------------------|-------------------------------|--------------------|-----------------------------|---------|---------------------------|
| A | B | C ₀₋₁ | D | P | Nennspannkraft voll belegt | Anzahl Gewinde pro Polreihe M | Anzahl Polreihen M | Anzahl Gewinde Ausführung M | Gewicht | Steuerung max. Imp. Strom |
| 480 | 300 | 97 | 60 | 55 | 21.600 | 4 | 9 | 36 | 94,0 | 30 |
| 590 | 300 | 97 | 60 | 55 | 26.550 | 4 | 11 | 44 | 116,0 | 30 |
| 810 | 300 | 97 | 60 | 55 | 36.450 | 4 | 15 | 60 | 159,0 | 30 |
| 1030 | 300 | 97 | 60 | 55 | 46.350 | 4 | 19 | 76 | 202,0 | 30 |
| 1140 | 300 | 97 | 60 | 55 | 51.300 | 4 | 23 | 92 | 224,0 | 60 |
| 810 | 400 | 97 | 80 | 55 | 48.600 | 5 | 15 | 75 | 212,0 | 30 |
| 1030 | 400 | 97 | 80 | 55 | 61.800 | 5 | 19 | 95 | 270,0 | 60 |
| 1140 | 400 | 97 | 80 | 55 | 68.400 | 5 | 23 | 115 | 299,0 | 60 |
| 1580 | 400 | 97 | 80 | 55 | 94.900 | 5 | 29 | 145 | 414,0 | 60 |
| 2020 | 400 | 97 | 80 | 55 | 121.200 | 5 | 37 | 185 | 529,0 | 60x2 |
| 1030 | 500 | 97 | 70 | 55 | 77.250 | 7 | 19 | 133 | 337,0 | 60 |
| 1140 | 500 | 97 | 70 | 55 | 85.500 | 7 | 23 | 161 | 373,0 | 60 |
| 1580 | 500 | 97 | 70 | 55 | 118.500 | 7 | 29 | 203 | 517,0 | 60x2 |
| 2020 | 500 | 97 | 70 | 55 | 151.500 | 7 | 37 | 259 | 661,0 | 60x2 |

BESTELLBEISPIEL

Benennung SAV Nr. - A x B - P - Nennspannung - Option
 Elektro-Permanent-Magnet-Spannplatte SAV 243.77 - 1580 x 500 - 55 - 360 V - M