

## SAV 220.30

## PERMANENT MAGNETIC PALLETS

Transverse pole pitch  $P = 1.9 \text{ mm}$



### APPLICATION

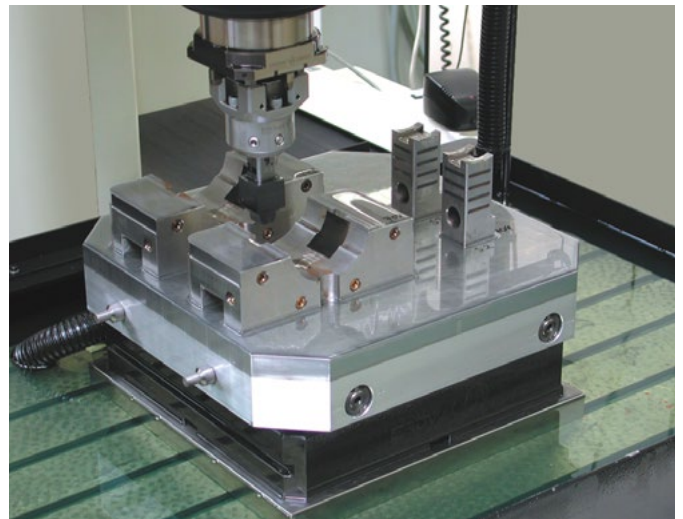
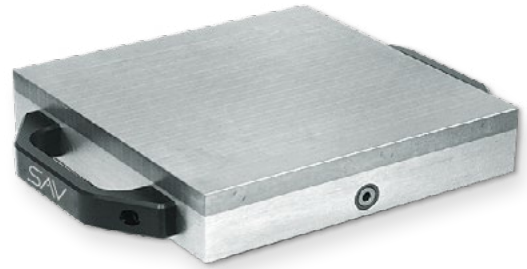
In conjunction with zero-point workholding systems. Can be adapted to most systems.

### MATERIAL

Aluminium main body with steel 1.0037/1.4571 pole plate

### TECHNICAL DATA

- Tapped holes for stop bars and stop brackets possible.
- Magnetic field height: 4 mm
- Wear layer of the pole plate: 3 mm
- Rated holding force: 80 N/cm<sup>2</sup>
- Pole pitch: 1.9 mm



mm				Qty.	kg
A	B	C*	D	Control points	Weight
240	240	46	204	1	19.0
280	280	67	230	2	25.0
320 <sup>1)</sup>	320	60	250	1/2	32.0

\* Exact dimension is determined through the reference system.  
<sup>1)</sup> With 45° chamfers on the corners for pallet changer

\* Dimension C is a guide value and is determined exactly through the reference system.

**ORDERING EXAMPLE**

Designation      SAV no. - A x B - control points - reference system - adaptation  
 Permanent magnetic pallet      SAV 220.30 - 320 x 320 - 1 - reference system - adaptation