

SAV 231.01

PRECISION PULL DOWN VICES

For precision workholding, accuracy version



DESIGN

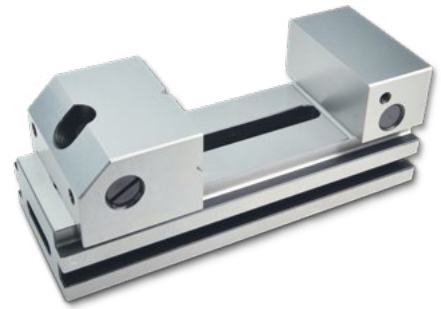
- Made of tool steel
- Fully hardened HRC 58-60
- Perpendicularity 0.003/100 mm
- Parallelism: 0.003/100 mm
- Horizontally and vertically ground-in prism in movable jaws
- Maximum accuracy when engaged through a "positive locking bridge" in the lower part, measured deformation: ± 0.004 mm

APPLICATION

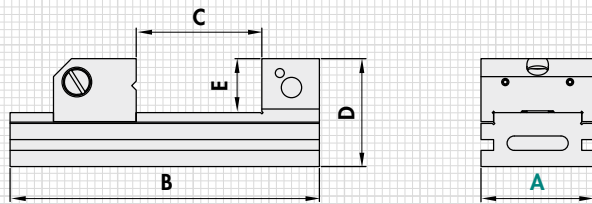
Grinding, drilling, measuring

OPTIONAL

Wooden storage box (surcharge applies)



mm					kg	Order no.
A	B	C	D	E	Weight	Wooden box
73	190	100	70	35	4.6	SAV 539.03
98	230	125	80	40	11.4	SAV 539.05
125	300	160	98	48	18.5	SAV 539.09
150	350	210	100	50	24.9	SAV 539.09



ORDERING EXAMPLE

Designation	SAV no. - A
Precision pull down vice	231.01 - 73

SAV 231.02

PRECISION MINI PULL DOWN VICE

For precision workholding of small workpieces



DESIGN

- Stainless tool steel, hardened
- Fully hardened HRC 45-55
- Perpendicularity 0.004
- Parallelism: 0.004
- Fastening holes on the side
- Stainless version

OPTIONAL

Wooden storage box (surcharge applies)

SCOPE OF DELIVERY

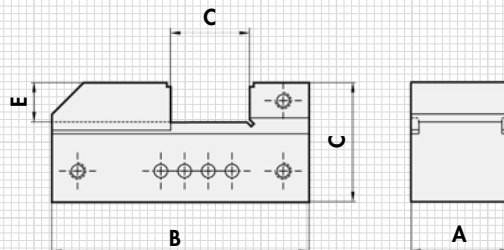
- Allen key
- Wooden storage box, optional



APPLICATION

Wire-cut and die-sinking EDM, grinding, drilling, measuring

mm					kg	Order no.
A	B	C	D	E	Weight	Wooden box
25	65	20	30	10	0.3	SAV 539.01



ORDERING EXAMPLE

Designation	SAV no.
Precision mini pull down vice	231.02