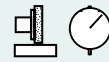


SAV 231.03

PRECISION PULL DOWN VICES

For precision workholding, standard version



DESIGN

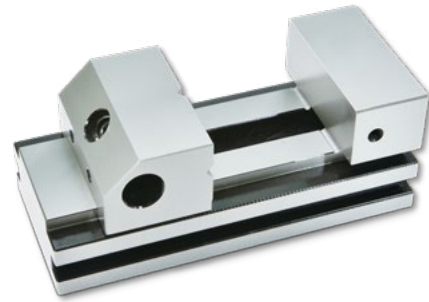
- Made of tool steel
- Fully hardened HRC 58-60
- Perpendicularity 0.003/100mm
- Parallelism: 0.003/100mm
- Horizontally and vertically ground-in prism in movable jaws

APPLICATION

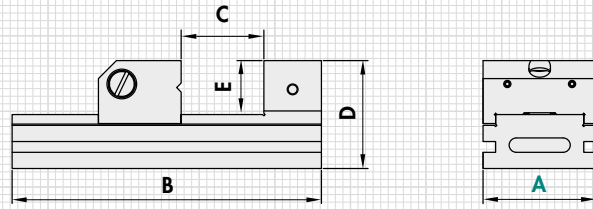
Grinding, drilling, measuring

OPTIONAL

Wooden storage box (surcharge applies)



mm					kg	Order no.
A	B	C	D	E	Weight	Wooden box
34	75	25	35	15	0.4	SAV 539.03
45	110	50	45	20	1.0	SAV 539.03
70	160	80	62	30	3.3	SAV 539.03
90	212	120	80	40	6.7	SAV 539.16
120	286	150	90	40	16.8	SAV 539.16



ORDERING EXAMPLE

Designation	SAV no. - A
Precision pull down vice	231.03 - 70

SAV 231.10

PRECISION PULL DOWN VICES

For precision workholding, stainless version



DESIGN

- Stainless tool steel, hardened
- Fully hardened HRC 45-55
- Perpendicularity 0.003/100 mm
- Parallelism: 0.003/100 mm
- Horizontally and vertically ground-in prism in movable jaws

APPLICATION

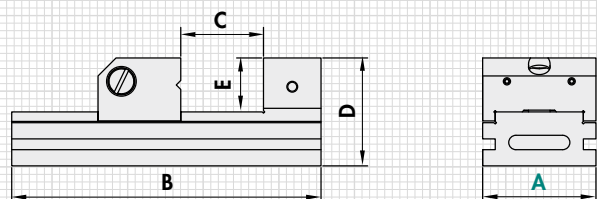
Wire-cut and die-sinking EDM, grinding, drilling, measuring

OPTIONAL

Wooden storage box (surcharge applies)



mm					kg	Order no.
A	B	C	D	E	Weight	Wooden box
48	150	75	50	25	2.0	SAV 539.03
63	176	90	60	30	3.3	SAV 539.05
73	190	100	70	35	4.3	SAV 539.05
98	245	125	80	40	9.8	SAV 539.09



ORDERING EXAMPLE

Designation	SAV no. - A
Precision pull down vice	231.10 - 73

1.3

1.4

2.1

2.2

3.1

3.2

4.1