

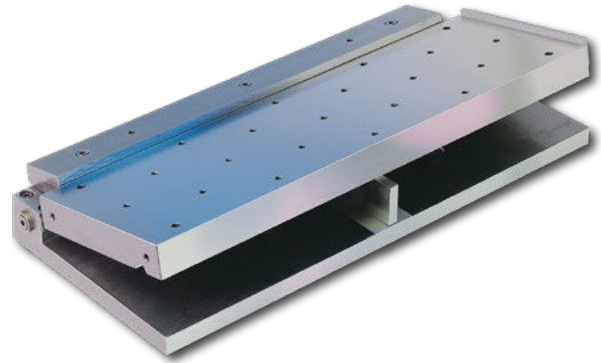
SAV 235.71

PRECISION SINE TABLES

Swivelling around the longitudinal axis

DESIGN

Swivelling around the longitudinal axis. Sine table base unit made of steel. Hardened, burnished and precision-ground. Swivel plate designed with tapped holes M8 (G). From size 400 x 200 mm available with T-grooves (T) (subject to a surcharge). Mechanical adjustment gear alternatively available (subject to a surcharge.) This increases the height by approx. 40 mm at 0° swivel angle. Delivered in a wooden storage box, up to and including size 450 x 150 mm. With sine table with degrees/minutes in mm.

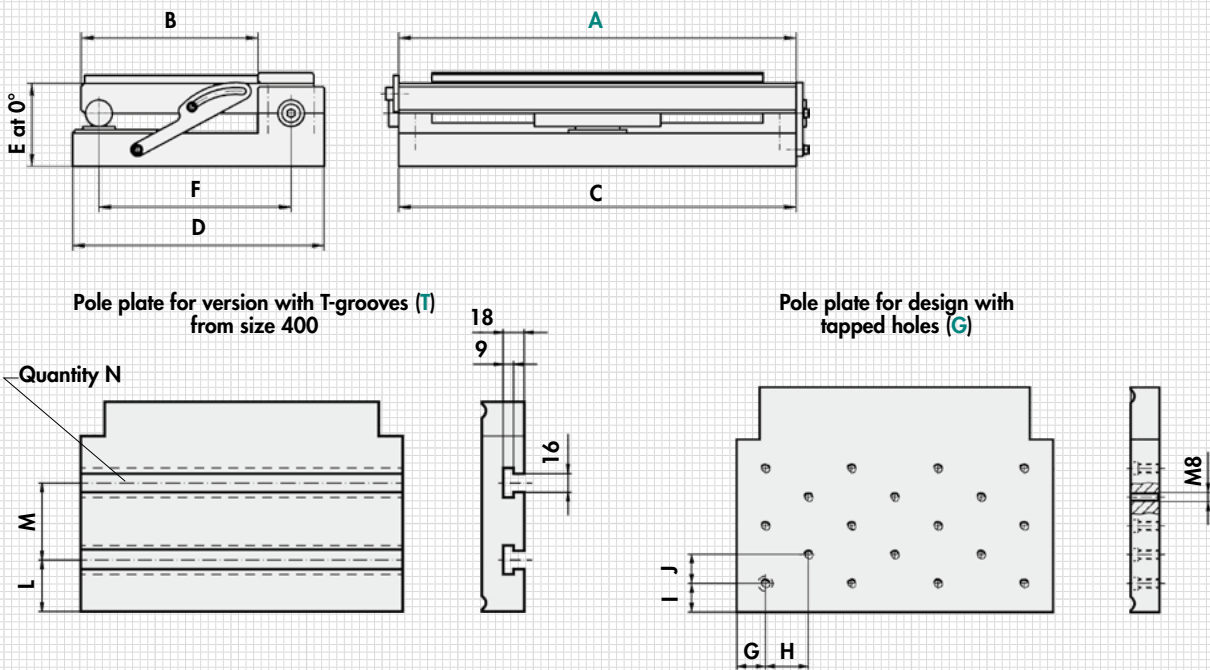


TECHNICAL DATA

- Angle accuracy: ±5 arc sec
- Plane parallelism: ±0.005/100 mm
- Gauge block at 0°: 3 mm
- Swivelling range: 0° to 45°

APPLICATION

The angles are determined using the gauge blocks using the sinusoidal principle. Depending on the workpiece, either precision toolmakers vices or controllable permanent magnets can be placed on the swivel plate. Clamping with lateral fastening brace and on the upper bearing shells.



mm													kg
A	B	C	D	E	F	G	H	I	J	L	M	N	Weight
100	50	100	95	47	65	12,5	12,5	25	12,5	-	-	-	3.0
160	160	160	205	47	175	20	20	20	20	-	-	-	9.0
175	100	175	145	47	115	20	22,5	20	30	-	-	-	7.5
250	150	250	195	52	165	25	25	25	25	-	-	-	14.0
350	150	350	195	60	165	25	25	25	25	-	-	-	26.0
400	200	400	245	60	215	25	25	25	25	50	100	2	37.0
450	150	450	195	60	165	25	25	25	25	35	80	2	33.5
500	200	500	245	65	215	25	25	25	25	50	100	2	48.5
600	300	600	345	70	315	25	25	25	25	50	100	3	90.0

ORDERING EXAMPLE

Designation SAV no. - A - version
 Precision sine table SAV 235.71 - 600 - G