

**SAV 240.02**

**HOLDING MAGNETS**

Stud with internal thread (flat pot magnet)

**DESIGN**

Flat pot magnet with threaded bush.  
Shielded system, galvanised surface.  
Version (RF) available for sizes with stated holding force. Max. service temperature: 200 °C.

**MAGNET MATERIAL**

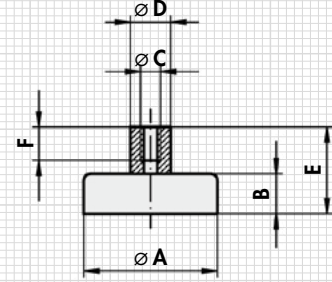
Hard ferrite (oxide 380)

**FASTENING OPTION**

Screws



Type	mm						Rated holding force N	Weight kg	RF Rated holding force N	RF C
	A ±0.2	B ±0.2	C	D ±0.2	E ±0.2	F ±0.2				
MH 2 - 01	10	4.5	M 3	6	11.5	7	4	0.003	-	-
MH 2 - 02	13	4.5	M 3	6	11.5	7	10	0.004	-	-
MH 2 - 03	16	4.5	M 3	6	11.5	7	18	0.006	-	-
MH 2 - 04	20	6	M 3	6	13	7	30	0.011	-	-
MH 2 - 05	25	7	M 4	8	15	8	40	0.020	32	M 5
MH 2 - 06	32	7	M 4	8	15	8	80	0.031	64	M 5
MH 2 - 36	36	7.7	M 4	8	16	8	100	0.042	-	-
MH 2 - 07	40	8	M 5	10	18	10	125	0.059	100	M 5
MH 2 - 47	47	9	M 6	12	21	12	180	0.091	-	-
MH 2 - 08	50	10	M 6	12	22	12	220	0.110	175	M 5
MH 2 - 57	57	10.5	M 6	12	22.5	12	280	0.153	-	-
MH 2 - 09	63	14	M 8	15	30	16	350	0.245	280	M 5
MH 2 - 10	80	18	M 10	20	34	16	600	0.499	-	-
MH 2 - 11	100	22	M 12	22	43	21	900	0.956	-	-
MH 2 - 12	125	26	M 14	25	50	20	1300	1.720	-	-



**ORDERING EXAMPLE**

Designation SAV no. - type - stainless version  
Holding magnet SAV 240.02 - MH 2 - 12 - RF

**SAV 240.03**

**HOLDING MAGNETS**

Flat pot magnet without threaded bush

**DESIGN**

Flat pot magnet without threaded bush.  
Shielded system, galvanised surface.  
Max. service temperature: 200 °C.

**MAGNET MATERIAL**

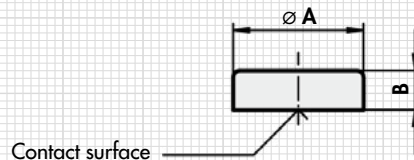
Hard ferrite (oxide 380)

**FASTENING OPTION**

Pressing, glueing.



Type	mm		Rated holding force N	Weight kg
	A ±0.2	B ±0.2		
MH 3 - 01	10	4.5	4	0.002
MH 3 - 02	13	4.5	10	0.003
MH 3 - 03	16	4.5	20	0.005
MH 3 - 04	20	6	30	0.010
MH 3 - 05	25	7	40	0.018
MH 3 - 06	32	7	80	0.029
MH 3 - 36	36	7.7	100	0.040
MH 3 - 07	40	8	110	0.055
MH 3 - 47	47	9	180	0.084
MH 3 - 08	50	10	200	0.100
MH 3 - 57	57	10.5	280	0.140
MH 3 - 09	63	14	320	0.230
MH 3 - 10	80	18	600	0.468
MH 3 - 11	100	22	900	0.915
MH 3 - 12	125	26	1300	1.680



**NOTE**

The following applies to all holding magnets type MH 3: Hairline cracks on the contact surface of the integrated magnetic material and a central offset are unavoidable due to manufacturing. This does not affect the function in any way.

**ORDERING EXAMPLE**

Designation SAV no. - type  
Holding magnet SAV 240.03 - MH 3 - 36