

SAV 240.06

**HOLDING MAGNETS**

Bar magnets without fitting tolerance

**DESIGN**

Bar magnet, smooth without fitting tolerance.  
Shielded system.  
Max. service temperature: 450 °C.

**FASTENING OPTION**

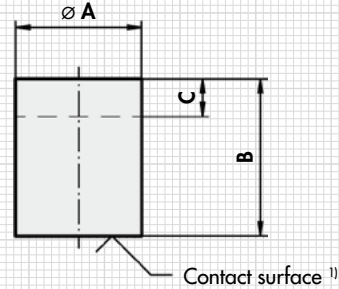
Pressing, shrinking, glueing

**NOTE**

For use in injection moulds with high injection pressure please contact us.

**MAGNET MATERIAL**

AlNiCo 500



Contact surface <sup>1)</sup>

**NOTE**

- <sup>1)</sup> In case of changes to the contact surface, no more than 2 mm may be removed, as otherwise the holding force decreases greatly.
- <sup>2)</sup> Bar magnets can be shortened at the rear end by dimension C without reducing the holding force.

Type	mm			Rated holding force N	Weight kg
	A ±0.2	B ±0.2	C <sup>2)</sup>		
MH 6 - 01	6	20	12	1.7	0.004
MH 6 - 02	8	20	11	4	0.007
MH 6 - 03	10	20	10	8.5	0.011
MH 6 - 04	13	20	8	12	0.019
MH 6 - 05	16	20	6	20	0.029
MH 6 - 06	20	25	5	45	0.061
MH 6 - 07	25	35	13	100	0.140
MH 6 - 08	32	40	9	190	0.240
MH 6 - 09	40	50	10	240	0.500
MH 6 - 10	50	60	10	420	0.900
MH 6 - 11	63	65	10	660	1.500

**ORDERING EXAMPLE**

Designation SAV no. - type  
Holding magnet SAV 240.06 - MH 6 - 08

SAV 240.07

**HOLDING MAGNETS**

Bar magnets with fitting tolerance

**DESIGN**

Bar magnet, smooth with fitting tolerance h6 in the diameter. Shielded system.  
Max. service temperature: 450 °C.

**FASTENING OPTION**

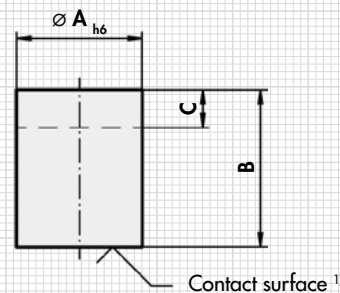
Pressing, shrinking, glueing

**NOTE**

For use in injection moulds with high injection pressure please contact us.

**MAGNET MATERIAL**

AlNiCo 500



Contact surface <sup>1)</sup>

**NOTE**

- <sup>1)</sup> In case of changes to the contact surface, no more than 2 mm may be removed, as otherwise the holding force decreases greatly.
- <sup>2)</sup> Bar magnets can be shortened at the rear end by dimension C without reducing the holding force.

Type	mm			Rated holding force N	Weight kg
	A h6	B ±0.2	C <sup>2)</sup>		
MH 7 - 01	6	10	2	1.5	0.002
MH 7 - 02	8	12	3	3.5	0.004
MH 7 - 03	10	16	6	7	0.009
MH 7 - 04	13	18	7	10	0.017
MH 7 - 05	16	20	5	18	0.029
MH 7 - 06	20	25	6	42	0.057
MH 7 - 07	25	30	5	96	0.110
MH 7 - 08	32	35	3	180	0.200
MH 7 - 09	40	45	5	240	0.420
MH 7 - 10	50	50	2	420	0.720
MH 7 - 11	63	60	5	660	1.340

**ORDERING EXAMPLE**

Designation SAV no. - type  
Holding magnet SAV 240.07 - MH 7 - 08