

**SAV 240.42**

**HOLDING MAGNETS WITH RUBBER COATING**

With threaded stud

**DESIGN**

Rubber-coated holding magnets, disc-shaped, with threaded studs on the rear. The Santoprene® rubber coating has a very long useful life and is sufficiently resistant to all weather conditions and UV radiation. Max. service temperature: 60 °C.

for scratch-free attaching of signs or sample parts to mirror-polished, chrome-plated or painted steel surfaces.

**MAGNET MATERIAL**

NdFeB

**FASTENING OPTION**

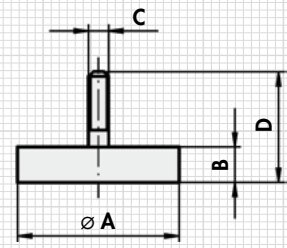
Screws



**APPLICATION**

The rubber-coated holding magnets are ideal for attaching items such as advertising displays, safety lamps on car roofs, but also

Type	mm				Rated holding force N	Weight kg
	A	B	C	D		
MG22-M4x6	22	6	M 4x6	8	50	0.011
MG43-M6x15	22	6	M 6x15	8	85	0.032
MG66-M8x15	66	8.5	M 8x15	10	180	0.107
MG88-M8x15	88	8.5	M 8x15	12	420	0.193



**ORDERING EXAMPLE**

Designation SAV no. - type  
Holding magnet SAV 240.42 - MG 22-M4x6

**SAV 240.09**

**HOLDING MAGNETS**

With h6 seat (bar magnet)

**DESIGN**

Brass magnet housing with integrated sandwich magnet system. Max. service temperature: 200 °C.

**MAGNET MATERIAL**

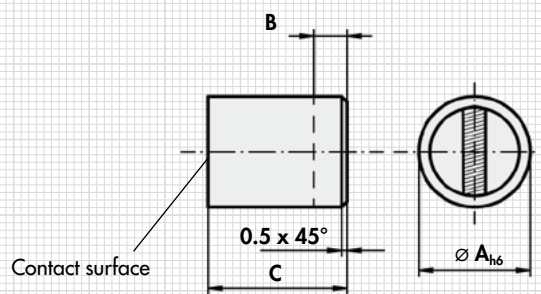
SmCo<sub>5</sub>

**FASTENING OPTION**

Pressing, glueing.



Type	mm				Rated holding force N	Weight kg
	A <sub>h6</sub>	B <sup>1)</sup>	C	D <sup>2)</sup>		
MH 9 - 01	6	10	20	1.5	8	0.004
MH 9 - 02	8	10	20	1.5	22	0.008
MH 9 - 03	10	8	20	2	40	0.012
MH 9 - 04	13	6	20	2.5	60	0.020
MH 9 - 05	16	2	20	3	125	0.032
MH 9 - 06	20	5	25	4	230	0.060
MH 9 - 07	25	7	35	5	400	0.140
MH 9 - 08	32	5	40	6	600	0.265



**NOTE**

- <sup>1)</sup> Bar magnets can be shortened at the rear end by dimension B without reducing the holding force.
- <sup>2)</sup> In case of changes to the contact surface, no more than dimension B may be removed, as otherwise the holding force decreases greatly.