

SAV 240.11

POT MAGNETS

With internal thread

DESIGN

Strong magnet with steel casing and threaded blind hole. Surface with wrinkle paint finish, red.

Max. service temperature:

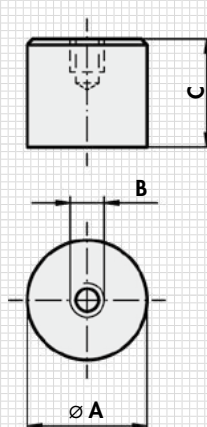
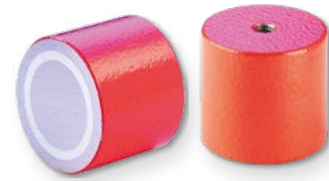
- 100 °C for paint
- 400 °C for magnet material

MAGNET MATERIAL

AlNiCo

FASTENING OPTION

Screws



Type	mm			Rated holding force N	Weight kg
	A	B	C		
MH 11 - 12	12.7	M 4	16	20	0.016
MH 11 - 17	17	M 6	16	20	0.025
MH 11 - 21	21	M 6	19	28	0.050
MH 11 - 27	27	M 6	25.4	68	0.110
MH 11 - 35	35	M 6	30	150	0.220
MH 11 - 35-2	35	M 6	20	100	0.160
MH 11 - 45	45	M 8	30	280	0.380
MH 11 - 50	50	M 8	40	350	0.630

ORDERING EXAMPLE

Designation SAV no. - type

Pot magnet SAV 240.11 - MH 11 - 65

SAV 240.12

FLAT POT MAGNETS

Hole with counterbore

DESIGN

Strong magnet with hole and counterbore.

Surface with wrinkle paint finish, red.

Max. service temperature:

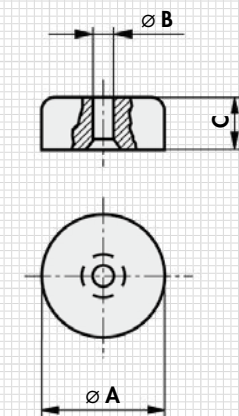
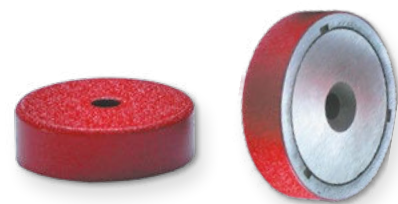
- 100 °C for paint
- 400 °C for magnet material

MAGNET MATERIAL

AlNiCo

FASTENING OPTION

Screws



Type	mm			Rated holding force N	Weight kg
	A	B	C		
MH 12 - 19	19	3.5	8	25	0.017
MH 12 - 29	29	4.7	9	50	0.044
MH 12 - 38	38	4.7	11.1	80	0.105

ORDERING EXAMPLE

Designation SAV no. - type

Flat pot magnet SAV 240.12 - MH 12 - 38