

SAV 240.13

BUTTON MAGNETS

Divided contact surface, with through hole

DESIGN

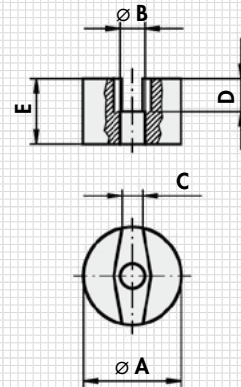
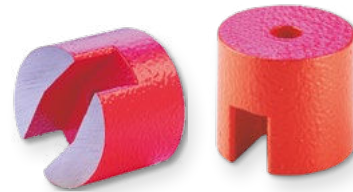
Divided contact surface, through hole.
Surface with wrinkle paint finish, red.
Max. service temperature:
- 100 °C for paint
- 400 °C for magnet material

MAGNET MATERIAL

AlNiCo

FASTENING OPTION

Screws from the contact surface side



Type	mm					Rated holding force N	Weight kg
	A	B	C	D	E		
MH 13 - 13	12.7	4.7	4	4.8	9.5	7	0.006
MH 13 - 19	19	5.2	5.5	6.4	12.7	19	0.019
MH 13 - 25	25.4	5.2	5.5	8	19.5	29	0.063
MH 13 - 32	32.5	7	8	12	25	66	0.105

ORDERING EXAMPLE

Designation SAV no. - type
Button magnet SAV 240.13 - MH 13 - 32

SAV 240.15

POT MAGNETS

With forcing screw¹⁾

DESIGN

Strong holding force, the handle facilitates removal from the material. Surface with wrinkle paint finish, red.
Max. service temperature:
- 100 °C for paint
- 400 °C for magnet material

FASTENING OPTION

Screws

APPLICATION

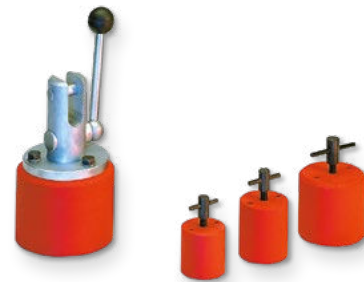
As a holding magnet, for light to medium transport work.

MAGNET MATERIAL

AlNiCo/hard ferrite

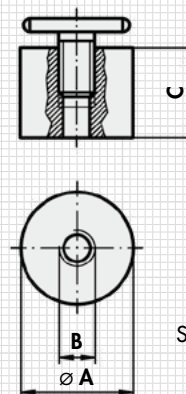
NOTE

¹⁾ MH 15 - 1 without forcing screw, but only with T-bolt.



MH 15 - 5

MH 15 - 2, 4



Shown without T-bolt

Type	mm			Rated holding force N	Permanent magnet material	Weight kg
	A	B	C			
MH 15 - 2	70	M 8	63	650	AlNiCo	2.02
MH 15 - 4	44	M 8	44	200	AlNiCo	0.52
MH 15 - 5	102	M 8	75	1700	AlNiCo	6.40

ORDERING EXAMPLE

Designation SAV no. - type
Pot magnet SAV 240.15 - MH 15 - 4