

SAV 240.14

HOLDING MAGNETS

With internal thread (bar magnet)

DESIGN

Bar magnet, smooth without fitting tolerance. NdFeB magnets have an up to approx. 50 % greater holding force than SmCo flat pot magnets. Shielded system. Seawater-resistant version (RF) available. Max. service temperature: 80 °C.

MAGNET MATERIAL

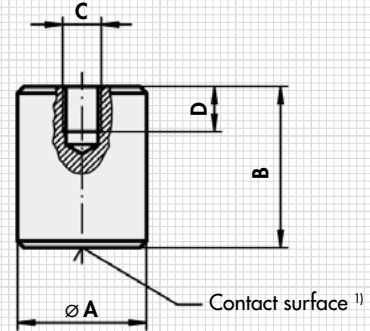
NdFeB

FASTENING OPTION

Screws



Type	mm				Rated holding force	RF Holding force	kg
	A ±0.2	B ±0.2	C	D			
MH 14 - 06	6	20	M 3	5	6	1	0.003
MH 14 - 08	8	20	M 3	5	12	4	0.006
MH 14 - 10	10	20	M 4	7	24	8	0.010
MH 14 - 13	13	20	M 4	7	60	16	0.016
MH 14 - 16	16	20	M 4	7	90	18	0.025
MH 14 - 20	20	25	M 6	9	135	32	0.055
MH 14 - 25	25	35	M 6	9	190	73	0.135
MH 14 - 32	32	40	M 8	12	340	115	0.230



NOTE

¹⁾ In case of profiling or removing the contact surface, no more than 2 mm may be removed, as otherwise the holding force decreases greatly.

ORDERING EXAMPLE

Designation SAV no. - type - stainless version
Holding magnet SAV 240.14 - MH 14 - 32 - RF

SAV 240.17

HOLDING MAGNETS

With h6 seat (bar magnet)

DESIGN

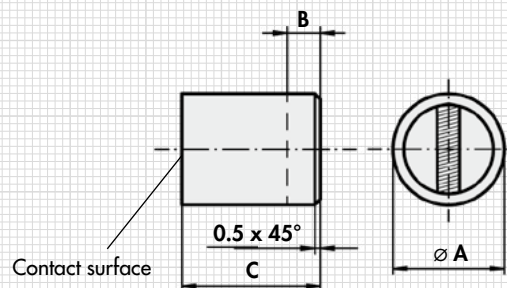
Brass magnet housing with integrated sandwich magnet system. Max. service temperature: 80 °C.

FASTENING OPTION

Pressing, glueing.



Type	mm				Rated holding force	kg
	A _{h6}	B ¹⁾	C	D ²⁾		
MH 17 - 01	6	10	20	1.5	10	0.004
MH 17 - 02	8	10	20	1.5	22	0.008
MH 17 - 03	10	8	20	2	45	0.012
MH 17 - 04	13	6	20	2.5	70	0.020
MH 17 - 05	16	2	20	3	150	0.032
MH 17 - 06	20	5	25	4	300	0.060
MH 17 - 07	25	7	35	5	500	0.140
MH 17 - 08	32	5	40	6	720	0.265



NOTE

¹⁾ Bar magnets can be shortened at the rear end by dimension B without reducing the holding force.
²⁾ In case of changes to the contact surface, no more than dimension B may be removed, as otherwise the holding force decreases greatly.

ORDERING EXAMPLE

Designation SAV no. - type
Holding magnet SAV 240.17 - MH 17 - 04